

# **K&H R**

*Firearms Group*<sup>®</sup>

**K&H R**  
**ARMS**

*Thompson*

Auto-Ordnance<sup>®</sup>

 **MAGNUM**  
RESEARCH<sup>®</sup>

 **DESERT EAGLE**<sup>®</sup>

 **BFR**<sup>®</sup>

**SWITCHBOLT**<sup>®</sup>

## FULL PRODUCT CATALOG

TWELFTH EDITION

## A Letter from the Owner: Justin Moon

For over 25 years, Kahr Firearms Group has been dedicated to the art of producing exceptional American made firearms. Beginning with the original K9 pistol in 1995, Kahr has focused on providing American shooters with accurate, durable, reliable, and fun firearms. The exercise of our fundamental freedom to keep and bear arms is near and dear to all of the staff at Kahr Firearms Group. This has driven Kahr's efforts to provide Americans with safe, high quality firearms that allow enjoyment of that freedom in many exciting ways. Kahr offers a range of firearms from practical pistols to concealable pistols; Magnum Research offers guns with unrivaled power and precision; Auto-Ordnance offers a range of historical firearms that honor our nation's history. Our family of brands truly has a gun for every shooter. Kahr Firearms Group exists to ensure Americans can fully exercise their fundamental liberty enshrined in the Second Amendment and enjoy themselves while doing so, our family brands truly have a gun for every shooter!

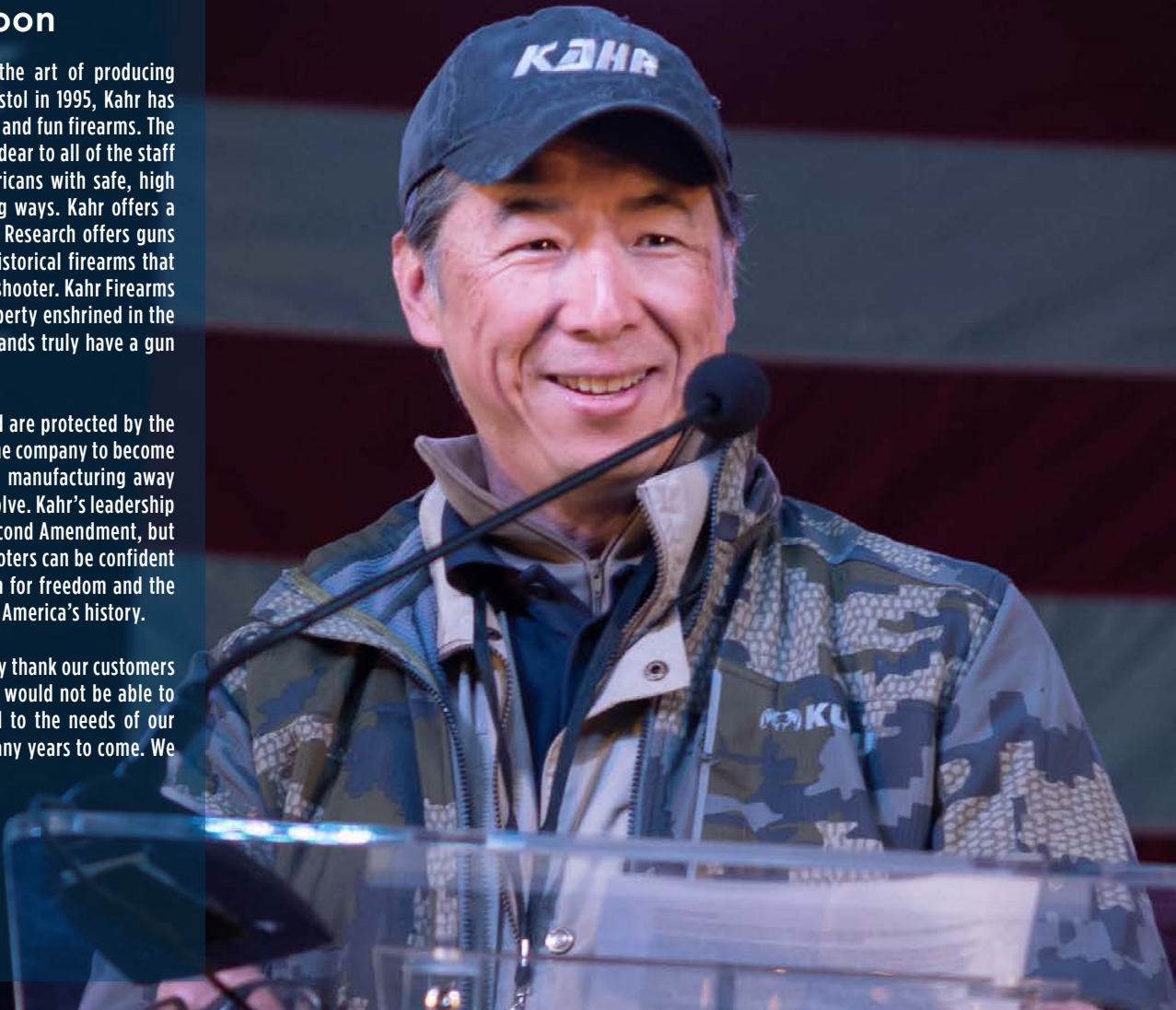
Semi-automatic firearms are in common use for lawful purposes and are protected by the Second Amendment. Kahr's devotion to the Second Amendment has led the company to become actively involved in preserving America's liberty. The decision to move manufacturing away from states that infringe on those rights was a direct statement of our resolve. Kahr's leadership has to have become active in political efforts to preserve not just the Second Amendment, but all the fundamental rights guaranteed by the Constitution. American shooters can be confident that they have a partner in the Kahr Firearms Group who will stand firm for freedom and the American way of life. This is our history, and we are proud to be a part of America's history.

As the founder and owner of Kahr Firearms Group, I want to personally thank our customers for over 25 years of patronage and support! Without our customers, we would not be able to continue providing accurate and reliable products. We remain devoted to the needs of our customers, and will continue providing them exceptional firearms for many years to come. We will continue to stand for freedom and the right to keep and bear arms!

Gratefully yours,

**Justin Moon**

Founder, and CEO  
Kahr Firearms Group



### KAHR ARMS

DOUBLE STACK SERIES • POLYMER FRAME MODELS   X . . . . .	3
PREMIUM SERIES • STEEL FRAME MODELS   K . . . . .	4
PREMIUM SERIES • STEEL FRAME MODELS   MK . . . . .	5
GEN 3 • PREMIUM SERIES • POLYMER FRAME MODELS   P93 . . . . .	6
PREMIUM SERIES • POLYMER FRAME MODELS   P . . . . .	7
PREMIUM SERIES • POLYMER FRAME MODELS   PM . . . . .	8
VALUE SERIES • POLYMER FRAME MODELS   CT . . . . .	9
VALUE SERIES • POLYMER FRAME MODELS   CW . . . . .	10
VALUE SERIES • POLYMER FRAME MODELS   CM . . . . .	11

### THOMPSON / AUTO-ORDNANCE

HISTORY OF THOMPSON   AUTO-ORDNANCE . . . . .	12
THOMPSON LONG GUNS • T1   THOMPSON . . . . .	13
THOMPSON LONG GUNS • T5, T5P, T3   THOMPSON . . . . .	14
SHORT BARREL RIFLES   THOMPSON . . . . .	15
THOMPSON LONG GUNS • T1-C, T1B   THOMPSON . . . . .	16
THOMPSON LONG GUNS • TMI, TMIC   THOMPSON . . . . .	17
THOMPSON PISTOLS   THOMPSON . . . . .	18
WASTELANDER   CUSTOM THOMPSON . . . . .	19
THOMPSON .50BMG TAO50   AUTO-ORDNANCE . . . . .	20
M1 CARBINES   AUTO-ORDNANCE . . . . .	22
1911A-1 PISTOLS   AUTO-ORDNANCE . . . . .	23

### MAGNUM RESEARCH

DESERT EAGLE MARK XIX   MAGNUM RESEARCH . . . . .	22-25
DESERT EAGLE MARK XIX L6   MAGNUM RESEARCH . . . . .	26
DESERT EAGLE MARK XIX L5   MAGNUM RESEARCH . . . . .	27
DESERT EAGLE MARK XIX STAINLESS   MAGNUM RESEARCH . . . . .	28
DESERT EAGLE MARK XIX CA APPROVED   MAGNUM RESEARCH . . . . .	29
DESERT EAGLE MARK XIX COMBO CALIBER KIT   MAGNUM RESEARCH . . . . .	30
DESERT EAGLE MARK XIX COMPONENT KIT   MAGNUM RESEARCH . . . . .	31
BFR SHORT CYLINDER MODELS   MAGNUM RESEARCH . . . . .	32-33
BFR LONG CYLINDER MODELS   MAGNUM RESEARCH . . . . .	34-35
MLR RIFFIRE MAGNUMLITE • SWITCHBOLT   MAGNUM RESEARCH . . . . .	36-39
MLR RIFFIRE MAGNUMLITE • SWITCHBOLT, STRAIGHT BOLT   MAGNUM RESEARCH . . . . .	39

## KAHR DOUBLE STACK SERIES

- ▶ SHIPS IN LOCKABLE, HARD, PLASTIC CASE
- ▶ SHIPS WITH TWO MAGAZINES
- ▶ LIMITED LIFETIME WARRANTY



Introducing the all-new double-stack X9 Pistol, brought to you by Kahr Firearms Group's highly skilled engineers. After listening to Kahr fans, Kahr engineers devoted thousands of hours to creating a double-stacked handgun that continues Kahr's tradition of quality, precision, reliability, and safety.

The Kahr X9 includes a precision 3.54" barrel for accuracy, a black polymer frame for comfortable handling, and a blackened stainless steel slide with front serrations for improved grip. The deep inset backstrap facilitates draw from an appendix carry position, and protrusions are minimized for comfort during concealed carry. A new lever based takedown system makes cleaning easy. The trigger is the safe cam, double-action only style that Kahr fans love.

Every X9 pistol is optics-ready, with the popular Holosun® K footprint allowing the shooter to customize the gun to suit their needs. Each X9 ships with two magazines, along with a sleeve, base lock, and base lock plate for use with Kahr X9 15 rd or SIG 17 rd X-Macro 9mm magazines.



# X9®

MADE WITH PRIDE IN THE U.S.A.

**KAHR**  
**ARMS**



**KAHR ARMS:**  
*THE FIRST AND BEST CHOICE FOR CONCEALED CARRY*

### X9® PORTED

KX9094RD10PT, KX9094RD15PT

**9 MM** | **10+1** ROUND

**9 MM** | **15+1** ROUND

- ▶ Barrel: 3.54", Stainless Steel Barrel
- ▶ Length O/A: 6.125"
- ▶ Height: 4.31" (w/KX910)
- ▶ Slide Width: 1"
- ▶ Weight: Pistol 17.6 oz.
- ▶ Sights: White bar-dot combat sights
- ▶ Optics Cut: Holosun® K Footprint
- ▶ Black Polymer Frame and Blackened Stainless Steel Slide
- ▶ KX9094RD10PT: One 10 Rd Stainless Magazine (KX910), One 10 Rd Stainless Magazine with Finger Rest Grip Extension (KX910EXT)
- ▶ KX9094RD15PT: One 15 Rd stainless magazine (KX915), One 10 Rd Stainless Magazine with Finger Rest Grip Extension (KX910EXT)



### X9®

KX9094RD10, KX9094RD15

**9 MM** | **10+1** ROUND

**9 MM** | **15+1** ROUND

- ▶ Barrel: 3.54", Stainless Steel Barrel
- ▶ Length O/A: 6.125"
- ▶ Height: 4.31" (w/KX910)
- ▶ Slide Width: 1"
- ▶ Weight: Pistol 17.6 oz.
- ▶ Sights: White bar-dot combat sights
- ▶ Optics Cut: Holosun® K Footprint
- ▶ Black Polymer Frame and Blackened Stainless Steel Slide
- ▶ KX9094RD10: One 10 Rd Stainless Magazine (KX910), One 10 Rd Stainless Magazine with Finger Rest Grip Extension (KX910EXT)
- ▶ KX9094RD15: One 15 Rd stainless magazine (KX915), One 10 Rd Stainless Magazine with Finger Rest Grip Extension (KX910EXT)

● Ported Models Available



NEW PRODUCTS  
**2026**



## PREMIUM SERIES MODELS



### KAHR PREMIUM SERIES

- ▶ SHIPS IN LOCKABLE, HARD, PLASTIC CASE
- ▶ SHIPS WITH THREE MAGAZINES
- ▶ LIMITED LIFETIME WARRANTY

The K Series steel 9mm was the first design rolled out of the factory in 1995, and the line of concealed carry handguns has continued to grow ever since. The K Series have proven themselves as being the best concealed carry/backup gun on the market by offering high quality and total reliability in a compact, thin package.

Other features include a Lothar Walther 3.5" polygonal rifled match grade barrel, smooth DAO trigger, matte stainless, and an option for night sights.



**K9®** K9093, K9093N

**9 MM** | **7+1 ROUND**

- ▶ Barrel: 3.5", Polygonal rifling; 1 - 10 RH twist
- ▶ Length O/A: 6.25"
- ▶ Height: 4.5"
- ▶ Slide Width: 0.9"
- ▶ Weight: Pistol 23.1 oz., Magazine 1.6 oz.
- ▶ Sights: Drift adjustable, White bar-dot combat sights
- ▶ Trigger Pull Weight: 7.0 lbs
- ▶ Matte Stainless Steel Frame and Slide
- ▶ Ships with three magazines

● Night Sights Available

## PREMIUM SERIES MODELS

### KAHR PREMIUM SERIES

- ▶ SHIPS IN LOCKABLE, HARD, PLASTIC CASE
- ▶ SHIPS WITH THREE MAGAZINES
- ▶ LIMITED LIFETIME WARRANTY



In 1995, the Kahr K9 became the first highly successful subcompact 9mm semi-automatic handgun. It was followed soon after by its smaller sibling, the MK9.

Building on the proven reliability of the subcompact K9, the MK9 reduced the size footprint even further, offering a 3" Lothar Walther polygonal rifled, match grade barrel, with a six round magazine capacity. The all steel construction of the MK9, recoil reducing design features, and smooth double-action only trigger makes it an exceptionally easy shooting pistol.

The MK9 is available with a polished or matte stainless slide and frame, as are optional night sights. With slender and elegant lines, the K9 and MK9 pistols continue to represent the ideal all-steel pistols for concealed carry.



#### MK9<sup>®</sup> M9093, M9093N

**9 MM** | **6+1 ROUND**

- ▶ Barrel: 3.0", Polygonal rifling; 1 - 10 RH twist
- ▶ Length O/A: 5.65"
- ▶ Height: 4.0"
- ▶ Slide Width: 0.9"
- ▶ Weight: Pistol 22.1 oz., Magazine 1.9 oz
- ▶ Sights: Drift adjustable, White bar-dot combat sights
- ▶ Trigger Pull Weight: 7.0 lbs
- ▶ Matte Stainless Steel Frame and Slide
- ▶ Ships with three magazines



#### MK9<sup>®</sup> ELITE M9098, M9098N

**9 MM** | **6+1 ROUND**

- ▶ Barrel: 3.0", Polygonal rifling; 1 - 10 RH twist
- ▶ Length O/A: 5.65"
- ▶ Height: 4.0"
- ▶ Slide Width: 0.9"
- ▶ Weight: Pistol 22.1 oz., Magazine 1.9 oz
- ▶ Sights: Drift adjustable, White bar-dot combat sights
- ▶ Trigger Pull Weight: 7.0 lbs
- ▶ Polished Stainless Steel Frame and Slide
- ▶ Ships with three magazines



● Night Sights Available    ● Polished Stainless

MADE WITH PRIDE IN THE U.S.A.

**KAHR  
ARMS**

PREMIUM SERIES • STEEL FRAME MODELS | MK



## PREMIUM SERIES MODELS

### KAHR PREMIUM SERIES

- ▶ SHIPS IN LOCKABLE, HARD, PLASTIC CASE
- ▶ SHIPS WITH TWO MAGAZINES
- ▶ LIMITED LIFETIME WARRANTY



Building on the legendary slim, smooth-shooting foundation of the Kahr P9, the new P93 is fully modernized for today's concealed carry demands. This updated model integrates essential tactical features without sacrificing Kahr's renowned ergonomics.

The P93 features a factory-cut slide in blackened stainless or matte stainless finish, cut to accept micro red dot sights with the Holosun® K footprint, alongside an integrated Picatinny dust cover rail for mounting compact tactical lights. The frame has reinforced steel front and rear inserts for greater durability.

Enhanced control is ensured by deep forward front and rear slide serrations for positive manipulation and a polymer frame with highly aggressive stippling, along with a deep inset thumb groove for a rock-solid grip in adverse conditions. The magazine well is flared for quick loading, and the recoil spring is captured.

Weight is 15 oz without magazine. The Kahr P93 combines slim concealability with modern tactical capability to create the perfect carry evolution. Two eight round magazines are included.



**P93** KP90T93RD | KP90T94RD

**9 MM** | **8+1 ROUND**

- ▶ Barrel: 3.54", Conventional rifling; 1-10 RH twist
- ▶ Length O/A: 5.8"
- ▶ Height:
- ▶ Slide Width: 0.9"
- ▶ Weight: 15 oz (w/o Magazine)
- ▶ Sights: Drift adjustable, White bar-dot combat sights
- ▶ Optics Cut: Holosun® K Footprint
- ▶ Trigger Pull Weight: 7.0 lbs
- ▶ Black Polymer Frame and Matte Stainless Steel Slide
- ▶ Ships with two magazines

NEW PRODUCTS  
**2026**

● Blackened Stainless Models Available

## PREMIUM SERIES MODELS

Just like the K Series, the P Series has also shown to be the best concealed carry/backup gun on the market, it offers high quality and total reliability in a compact polymer frame package.

Other features include a Lothar Walther 3.5" polygonal rifled match grade barrel (2.53" barrel for P380), smooth DAO trigger, matte stainless or blackened stainless slide and an option for night sights. This compact size is available in .380 ACP, 9mm, .40 S&W and .45 ACP, offers excellent balance in the hand.



MADE WITH PRIDE IN THE U.S.A. **KAHR ARMS**

## KAHR PREMIUM SERIES

- ▶ SHIPS IN LOCKABLE, HARD, PLASTIC CASE
- ▶ SHIPS WITH THREE MAGAZINES
- ▶ LIMITED LIFETIME WARRANTY



**P45<sup>®</sup>** KP4543N, KP4544N

**.45 ACP** | **6+1** ROUND

- ▶ Barrel: 3.5", Polygonal rifling, 1 - 16.38 RH twist
- ▶ Length O/A: 6.52"
- ▶ Height: 4.8"
- ▶ Slide Width: 1.00"
- ▶ Weight: Pistol 18.5 oz., Magazine 2 oz.
- ▶ Sights: Night Sights
- ▶ Trigger Pull Weight: 7.0 lbs
- ▶ Black Polymer Frame and Matte Stainless Steel Slide
- ▶ Ships with three magazines



**P9** KP9093N, KP9094N, KP90G94N

**9 MM** | **7+1** ROUND

- ▶ Barrel: 3.5", Polygonal rifling; 1 - 10 RH twist
- ▶ Length O/A: 6.37"
- ▶ Height: 4.5"
- ▶ Slide Width: 0.9"
- ▶ Weight: Pistol 15 oz., Magazine 1.6 oz.
- ▶ Sights: Night Sights
- ▶ Trigger Pull Weight: 7.0 lbs
- ▶ Black Polymer Frame and Matte Stainless Steel Slide
- ▶ Ships with three magazines



**P40<sup>®</sup>** KP4043N, KP4044N

**.40 S&W** | **6+1** ROUND

- ▶ Barrel: 3.6", Polygonal rifling; 1 - 16 RH twist
- ▶ Length O/A: 6.40"
- ▶ Height: 4.6"
- ▶ Slide Width: 0.94"
- ▶ Weight: Pistol 16.8 oz., Magazine 1.9 oz.
- ▶ Sights: Night Sights
- ▶ Trigger Pull Weight: 7.0 lbs
- ▶ Black Polymer Frame and Matte Stainless Steel Slide
- ▶ Ships with three magazines



**P380<sup>®</sup>** KP3834N, KP38233, KP38233N

**.380 ACP** | **6+1** ROUND

- ▶ Barrel: 2.53", Premium Lothar Walther Match Grade Barrel
- ▶ Length O/A: 5.01"
- ▶ Height: 3.9"
- ▶ Slide Width: 0.75"
- ▶ Weight: Pistol 9.9 oz., Magazine 1.3 oz.
- ▶ Sights: Night Sights
- ▶ Trigger Pull Weight: 7.0 lbs
- ▶ Black Polymer Frame and Blackened Stainless Steel Slide
- ▶ Ships with three magazines



● Blackened Stainless Models Available ● Night Sights Available ● CA Compliant Models Available ● Greeley, PA Production Models

PREMIUM SERIES MODELS



**PM45<sup>®</sup>** PM4544N

**.45 ACP | 5+1 ROUND**

- ▶ Barrel: 3.2", Polygonal rifling, 1 - 16.38 RH twist
- ▶ Length O/A: 6.00"
- ▶ Height: 4.5"
- ▶ Slide Width: 1.00"
- ▶ Weight: Pistol 17.3 oz., Magazine 2 oz.
- ▶ Sights: Night sights
- ▶ Trigger Pull Weight: 7.0 lbs
- ▶ Black Polymer Frame and Blackened Stainless Steel Slide
- ▶ Ships with three magazines



**PM40<sup>®</sup>** PM4044N

**.40 S&W | 5+1 ROUND**

- ▶ Barrel: 3.1", Polygonal rifling; 1 - 16 RH twist
- ▶ Length O/A: 5.71"
- ▶ Height: 4.0"
- ▶ Slide Width: 0.94"
- ▶ Weight: Pistol 15.8 oz., Magazine 1.9 oz
- ▶ Sights: Night sights
- ▶ Trigger Pull Weight: 7.0 lbs
- ▶ Black Polymer Frame and Blackened Stainless Steel Slide
- ▶ Ships with three magazines



**PM9<sup>®</sup>** PM90G94N

**9 MM | 6+1 ROUND**

- ▶ Barrel: 3.1", Polygonal rifling; 1 - 10 RH twist
- ▶ Length O/A: 5.75"
- ▶ Height: 4.0"
- ▶ Slide Width: 0.9"
- ▶ Weight: Pistol 14 oz., Magazine 1.9 oz.
- ▶ Sights: Night sights
- ▶ Trigger Pull Weight: 7.0 lbs
- ▶ Black Polymer Frame and Matte Stainless Steel Slide
- ▶ Ships with three magazines



● Blackened Stainless Models Available ● Night Sights Available ● Greeley, PA Production Models

KAHR PREMIUM SERIES

- ▶ SHIPS IN LOCKABLE, HARD, PLASTIC CASE
- ▶ SHIPS WITH THREE MAGAZINES
- ▶ LIMITED LIFETIME WARRANTY



Kahr's PM Series offer the highest quality, thin profile subcompact, pocket carry handgun on the market today. Bigger is not always better especially when looking for a concealed carry handgun. Features include a Lothar Walther 3" polygonal rifled match grade barrel, smooth DAO trigger, matte stainless or blackened stainless slide, and an option for night sights. The PM Series available in 9mm, .40 S&W and .45 ACP.

Thanks to the PM Series, Kahr Arms has become a leader in the firearms market by offering light, thin, and small firearms that are perfect for concealed carry.



**Did You Know?**

- ▶ Kahr Arms began in 1994.
- ▶ In 1999, Kahr bought Thompson & Auto-Ordnance, the maker of the world famous "Tommy Gun."
- ▶ In 2010, Magnum Research was acquired, home of the Desert Eagle pistol.

## VALUE SERIES MODELS

### KAHR VALUE SERIES

- ▶ SHIPS IN CARDBOARD CASE
- ▶ SHIPS WITH ONE MAGAZINE
- ▶ ONE-YEAR WARRANTY



The CT Series is designated as Kahr's full frame and valued-priced firearm. These pistols feature a full-size polymer frame with a matte, stainless steel slide and each is equipped with drift adjustable, white bar-dot sights.

For decades Kahr has offered gun enthusiasts the option of both compact and full-frame firearms. However, not all shooters have the same budget for purchasing firearms. Kahr recognizes this and has answered the call from customers who want to stretch their gun-money as far as possible. Since the TP Series has been popular and one of our legendary performers, Kahr took the best features, and without compromising the detail and quality, developed the Value Priced CT Series.

Like all Kahr pistols, the CT4543, CT9093, and CT3833 allowing for an industry-leading slim, clean single-stack design—ideally suited to both concealed carry and home defense.



MADE WITH PRIDE IN THE U.S.A.

**KAHR**  
**ARMS**

### CT45<sup>®</sup> CT4543

**.45 ACP | 7+1 ROUND**

- ▶ Barrel: 4.0", Conventional rifling; 1 - 16.38 RH twist
- ▶ Length O/A: 7.02"
- ▶ Height: 5.3"
- ▶ Slide Width: 1.00"
- ▶ Weight: Pistol 23.7 oz., Magazine 2.4 oz.
- ▶ Sights: Drift adjustable white bar-dot combat rear sight, Pinned in polymer front sight
- ▶ Trigger Pull Weight: 7.0 lbs
- ▶ Black Polymer Frame and Matte Stainless Steel Slide
- ▶ Ships with one magazine

### CT9<sup>®</sup> CT9093, CT9093N

**9 MM | 8+1 ROUND**

- ▶ Barrel: 4.0", Conventional rifling; 1 - 10 RH twist
- ▶ Length O/A: 6.86"
- ▶ Height: 5.08"
- ▶ Slide Width: 0.90"
- ▶ Weight: Pistol 18.5 oz., Magazine 2.4 oz.
- ▶ Sights: Drift adjustable white bar-dot combat rear sight, Pinned in polymer front sight
- ▶ Trigger Pull Weight: 7.0 lbs
- ▶ Black Polymer Frame and Matte Stainless Steel Slide
- ▶ Ships with one magazine

### CT380<sup>®</sup> CT3833

**.380 ACP | 7+1 ROUND**

- ▶ Barrel: 3.0", Conventional Rifling, 1 - 16 RH twist
- ▶ Length O/A: 5.56"
- ▶ Height: 4.4"
- ▶ Slide Width: 0.75"
- ▶ Weight: Pistol 11.4 oz., Magazine 1.4 oz.
- ▶ Sights: Drift adjustable white bar-dot combat rear sight, Pinned in polymer front sight
- ▶ Trigger Pull Weight: 7.0 lbs
- ▶ Black Polymer Frame and Matte Stainless Steel Slide
- ▶ Ships with one magazine

● Front Night Sight Model Available

VALUE SERIES MODELS



**CW45<sup>®</sup>** CW4543

**.45 ACP | 6+1 ROUND**

- ▶ Barrel: 3.6", Conventional rifling, 1 - 16.38 RH twist
- ▶ Length O/A: 6.52"
- ▶ Height: 4.8"
- ▶ Slide Width: 1.0"
- ▶ Weight: Pistol 18.5 oz., Magazine 2 oz.
- ▶ Sights: Drift adjustable white bar-dot combat rear sight, Pinned in polymer front sight
- ▶ Trigger Pull Weight: 7.0 lbs
- ▶ Black Polymer Frame and Matte Stainless Steel Slide
- ▶ Ships with one magazine



**CW9<sup>®</sup>** CW90G93, CW90G93N

**9 MM | 7+1 ROUND**

- ▶ Barrel: 3.5", Conventional rifling; 1-10 RH twist
- ▶ Length O/A: 6.37"
- ▶ Height: 4.5"
- ▶ Slide Width: 0.9"
- ▶ Weight: Pistol 15.8 oz., Magazine 1.6 oz.
- ▶ Sights: Drift adjustable white bar-dot combat rear sight, Pinned in polymer front sight
- ▶ Trigger Pull Weight: 7.0 lbs
- ▶ Black Polymer Frame and Matte Stainless Steel Slide
- ▶ Ships with one magazine



**CW380<sup>®</sup>** CW3833, CW3833N

**.380 ACP | 6+1 ROUND**

- ▶ Barrel: 2.58", Conventional Rifling, 1 - 16 RH twist
- ▶ Length O/A: 5.01"
- ▶ Height: 3.9"
- ▶ Slide Width: 0.75"
- ▶ Weight: Pistol 10.2 oz., Magazine 1.3 oz.
- ▶ Sights: Drift adjustable white bar-dot combat rear sight, Pinned in polymer front sight
- ▶ Trigger Pull Weight: 7.0 lbs
- ▶ Black Polymer Frame and Matte Stainless Steel Slide
- ▶ Ships with one magazine



**KAHR VALUE SERIES**

- ▶ SHIPS IN CARDBOARD CASE
- ▶ SHIPS WITH ONE MAGAZINE
- ▶ ONE-YEAR WARRANTY



Like the PM Series, the CW Series has a perfect combination for a Concealed Carry Pistol. With the ideal combination of stopping power and shooting comfort, the CW Series is smaller, thinner, and lighter compared to competitor brands. This also allows for a more natural point of aim and a low-felt recoil.

With the introduction of innovative manufacturing processes, the Kahr CW Series pistols represent an unrivaled value.



**Did You Know?**

- ▶ Kahr Firearms Group consists of the following major product lines Kahr Arms, Auto-Ordnance, Thompson, Desert Eagle, BFR and Magnum Research.
- ▶ Our company headquarters is located in Greeley, PA.

## VALUE SERIES MODELS

### KAHR VALUE SERIES

- ▶ SHIPS IN CARDBOARD CASE
- ▶ SHIPS WITH ONE MAGAZINE
- ▶ ONE-YEAR WARRANTY



The CM Series debuted in the spring of 2011 with the introduction of the CM9. The CM Series slide is only .90"-1.00" wide and is machined from a solid 416 stainless slide with a matte finish. It takes value-priced features from the CW Series (3.6" barrel and the 9mm/.45 ACP models) and incorporates them into a smaller 3" barrel. With the same external dimensions as the PM Series, it becomes ideal for concealed carry by licensed civilians and law enforcement personnel.

Kahr offers the CM Series at a great value price but does not compromise on the features, accuracy or reliability found in all Kahr pistols.



### CM45<sup>®</sup> CM4543

**.45 ACP | 5+1 ROUND**

- ▶ Barrel: 3.34", Conventional rifling; 1 - 16.38 RH twist
- ▶ Length O/A: 6.00"
- ▶ Height: 4.5"
- ▶ Slide Width: 1.00"
- ▶ Weight: Pistol 17.3 oz., Magazine 2 oz.
- ▶ Sights: Drift adjustable white bar-dot combat rear sight, Pinned in polymer front sight
- ▶ Trigger Pull Weight: 7.0 lbs
- ▶ Black Polymer Frame and Matte Stainless Steel Slide
- ▶ Ships with one magazine



### CM9<sup>®</sup> CM9093, CM9093N

**9 MM | 6+1 ROUND**

- ▶ Barrel: 3.0", Conventional rifling; 1 - 10 RH twist
- ▶ Length O/A: 5.75"
- ▶ Height: 4.0"
- ▶ Slide Width: 0.9"
- ▶ Weight: Pistol 14 oz., Magazine 1.9 oz.
- ▶ Sights: Drift adjustable white bar-dot combat rear sight, Pinned in polymer front sight
- ▶ Trigger Pull Weight: 7.0 lbs
- ▶ Black Polymer Frame and Matte Stainless Steel Slide
- ▶ Ships with one magazine



● Front Night Sight Models Available

MADE WITH PRIDE IN THE U.S.A.



## THOMPSON SUBMACHINE GUN

In 1915 a graduate of West Point would watch World War I drag on and amount casualties over time. Having served in the U.S. Army's ordnance supplies and logistics, General John T Thompson understood that greater firepower was needed to end the war, and so he started researching an automatic weapon he could supply to the American Military.

He had an idea to make "a one-man, hand-held machine gun, a trench broom!" General Thompson was driven to create a lightweight, fully automatic firearm that would be effective against contemporary machine guns. The first shipment of Thompson prototypes arrived on a dock in New York, and was sent out to Europe on November 11th 1918, the day the War ended.

The following year in 1919, General Thompson directed a company by the name of Auto-Ordnance to modify the gun for nonmilitary use. They came up with a small hand-held, fully automatic firearm, chambered for pistol ammunition. These features classified it as a "submachine gun" and was given the official name "Thompson Submachine Gun" to honor the man most responsible for its creation.

With military and police sales low, Auto-Ordnance sold its submachine guns through every legal outlet it could. A Thompson submachine gun could be purchased either by mail order, or from the local hardware or sporting goods store.

## THE ROARING 20s

The decade known as the Roaring 20's saw a new market for the Thompson, with law enforcement agencies seeking additional firepower to combat organized criminals and the "motor bandits" plaguing a Depression crippled nation. Federal and state law enforcement agencies bought the Tommy Gun to even the odds against the criminals they faced.

Since some gangsters also made use of the Tommy Gun in their own criminal escapades, they too developed their own name for it and called it the "Chicago Typewriter". This era cemented the Thompson in American culture as an icon of the Roaring 20's, and on the big screens where it was immortalized in motion pictures as a tool for both good and evil.

## TRUSTED COMPANION FOR TROOPS

In the mid '20s The Thompson Submachine Gun was adopted into the official military branch, The U.S. Coast Guard. They issued Thompsons to help with patrolling the eastern seaboard, and in 1928, Auto-Ordnance made a new Navy model to be used by marines on naval gunboats.

As World War II began, the Army recognized the need for a submachine gun and the Thompson was redesigned to be simpler and to have increased reliability. The compensator, cooling fins, and the front grip were all removed, and the drum magazine compatibility was eliminated and replaced with a 30 round magazine as the new standard. The Tommy Gun became the constant companion of American soldiers, there are many stories talking about how the firepower of the Thompson submachine gun protected troops, and helped win battles in Europe and the Pacific.

## HISTORICAL RESEARCH

Kahr Firearms Group is proud and dedicated to preserving the original design and make of the infamous Thompson Submachine Gun and the legacy of the Auto-Ordnance Corporation. To assure the historical accuracy of Auto-Ordnance designs, Kahr has researched and examined the original engineering and drawings as well as hundreds of U.S. Military microfiches and hand drawings from 1919.

## THE AUTO-ORDNANCE THOMPSON: AN AMERICAN ICON

The Auto-Ordnance Thompson is a historical, semi-automatic firearm, and each gun is a union of original design, quality materials, and fine workmanship. The Tommy Gun represents the preservation of an American legacy of ingenuity and craftsmanship and has been carried by lawmen of the 1920s and trusted by GIs during World War II. Owning an Auto-Ordnance Thompson is an opportunity to experience the feel of an original icon.



OWN A PIECE OF AMERICAN HISTORY!

## Thompson® 1927A-1

**.45 ACP** | MODELS: **T1 / T1100D / T150D ● / T1D / T110S**

**.45 ACP** | MODEL: **T1-14** (16.5" Barrel)

**.45 ACP** | MODELS: **T1DH / T110SH** (Horizontal Foregrip)

- ▶ Available in both 18" barrel and 16.5" barrel
- ▶ Available in steel receiver
- ▶ Accepts both stick and drum magazines



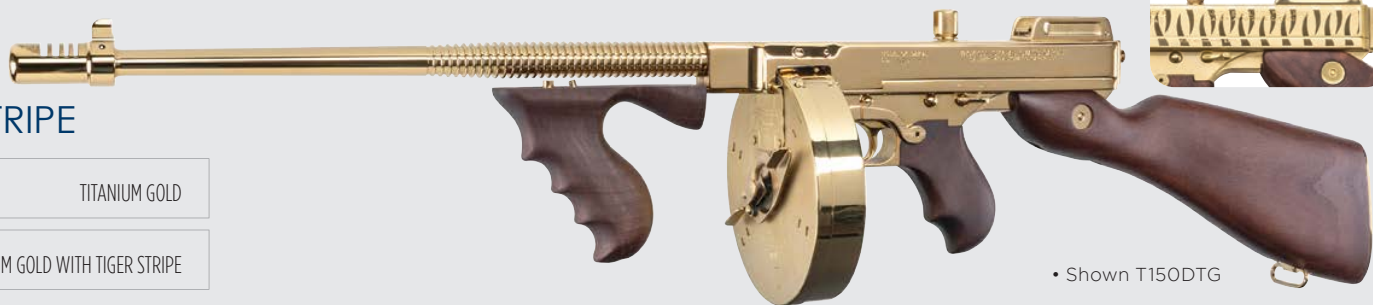
• Shown T150D

## Thompson® 1927A-1 TITANIUM GOLD & TIGER STRIPE

**.45 ACP** | MODEL: **T150DTG** TITANIUM GOLD

**.45 ACP** | MODEL: **T150DTGTS** TITANIUM GOLD WITH TIGER STRIPE

- ▶ Accepts both stick and drum magazines
- ▶ Ships with one polished titanium gold plated 50 round drum and one 20 round stick magazines



• Shown T150DTG

Titanium Gold Tiger Stripe



## Thompson® 1927A-1 HARD CHROME & TIGER STRIPE

**.45 ACP** | MODEL: **T150DCR** HARD CHROME

**.45 ACP** | MODEL: **T150DCR TS** HARD CHROME WITH TIGER STRIPE

- ▶ Accepts both stick and drum magazines
- ▶ Ships with one polished hard chrome 50 round drum and one 20 round stick magazines



• Shown T150DCR

Hard Chrome Tiger Stripe



For more than 100 years, the “Chicago Typewriter®”, the time-honored submachine gun, has been a favorite among collectors and shooting enthusiasts.

The .45 ACP caliber Thompson 1927A-1 has a pinned Cutts compensator, which lengthens the finned barrel length to 18”, and puts the overall length for the carbine at 41” from buttstock to muzzle. The pinned Cutts compensator offered on the 18” barrel models are not considered part of the barrel.

The Thompson T1-14 models with a barrel length of just 16.5”, it is 1.5” shorter than the existing T1 models with the 18” barrels. The BATFE recently approved the permanently affixed Cutts compensator as a part of the 16.5” barrel.

We are offering both a polished titanium gold finish and a chrome finish for the Thompson 1927A-1, as well as a Tiger Stripe finish. It’s sure to undoubtedly impress your friends at the shooting range.



MADE WITH PRIDE IN THE U.S.A.



## Thompson® 1927A-1C LIGHTWEIGHT TOMMY GUN

**.45 ACP** | MODELS: **T5** / **T5100D**

- ▶ Available in aluminum receiver
- ▶ Accepts both stick and drum magazines
- ▶ Fixed battle rear sight



• Shown T5100D

## Thompson® 1927A-1C POLYMER FURNITURE TOMMY GUN

**.45 ACP** | MODELS: **T5P** ● / **T5P50D** ● / **T5P100D** ●

- ▶ Walnut Grain Polymer Furniture
- ▶ Available in aluminum receiver
- ▶ Accepts both stick and drum magazines
- ▶ Fixed battle rear sight
- ▶ 38.5% lighter than the T1 Model



• Shown T5P

## Thompson® 1927A3 .22 LR TOMMY GUN

**.22 LR** | MODEL: **T3** ●

- ▶ Walnut Grain Polymer Furniture
- ▶ Ships with 10 round magazine
- ▶ Fixed battle rear sight and Picatinny rear accessory rail



Picatinny Rear Accessory Rail

NEW PRODUCTS  
2026

The Tommy Gun is offered with a lighter-weight aluminum receiver on the T5 and T5P models. The T5 features a blade front sight and a fixed battle rear sight, with a fixed stock crafted from American Walnut and a vertical foregrip.

The T5P and T3 models are equipped with the same sight configuration as the T5. The T3 additionally includes a Picatinny rear accessory rail. Both the T5P and T3 utilize Walnut Grain Polymer furniture.



**COLLECTIBLE • LEGAL TO OWN**

Tommy Guns are prohibited in CT, MD, NY. Please check with your local law enforcement agencies.

● Polymer Furniture Models Available



## Thompson® 1927A-1 SBR

**.45 ACP** | MODEL: **T1SB** (12" Barrel)

- ▶ Ships with one 20 round stick magazine (Shown with optional 50 round drum magazine)
- ▶ Accepts both stick and drum magazines
- ▶ Available in steel only

This is the original Thompson design made famous during the 1920's in the hands of gangsters and G-men. Its operation is semi-auto, firing from a closed bolt, and featuring a 10.5" barrel. The frame and receiver are machined from solid steel and the stock is genuine American walnut. The finish is blued steel.



## Thompson® 1927A-1 SBR Detachable Buttstock

**.45 ACP** | MODEL: **T1BSB** (12" Barrel)

- ▶ Ships with one 20 round stick magazine
- ▶ Detachable buttstock
- ▶ Accepts both stick and drum magazines
- ▶ Available in steel only



## Thompson® M1 SBR

**.45 ACP** | MODEL: **M1SB** (10.5" Barrel)

- ▶ Ships with one 30 round stick magazine
- ▶ Will not accept drum magazines
- ▶ Available in steel only
- ▶ This is a stunning reproduction of the Thompson military model made famous during WWII. The operation is semi-auto, fires from a closed bolt and has a 10.5" long barrel. The frame and receiver are machined from solid steel and the stock is genuine American walnut. The finish is blued steel.
- ▶ Thompson Short Barrel Rifles must be shipped to a Class 2 manufacturer or Class 3 dealer directly from our factory in Greeley, PA.
- ▶ The transfer paperwork between Kahr Arms/Auto-Ordnance and the dealer, known as a Form 3, must be completed and approved by the NFA branch, Bureau of Alcohol, Tobacco and Firearms (BATF) before the Thompson SBR can be shipped to the dealer. The customer needs to pay a \$200 transfer fee directly to the BATF. Your local dealer can assist you in this process.



This is a stunning reproduction of the Thompson military model made famous during WWII. Its operation is semi-automatic, firing from a closed bolt. Both frame and receiver are machined from solid steel, the stock is genuine American walnut, and has a blued steel finish.



### COLLECTIBLE • LEGAL TO OWN

Short Barrel Rifles (SBRs) are prohibited in CT, HI, IL, MD, NJ, NY, RI, WA. However, local laws may also prohibit SBRs. Please check with your local law enforcement agencies.

MADE WITH PRIDE IN THE U.S.A.



## Thompson® 1927A-1 "COMMANDO"

**.45 ACP** | MODEL: **T1C**

- ▶ Parkerized steel and all wood stock, rear grip and horizontal forend in a durable black finish.
- ▶ Ships with 20 round magazine.
- ▶ Accepts both stick and drum magazines



## Thompson® 1927A-1 Detachable Buttstock

**.45 ACP** | MODELS: **T1B / T1B100D / T1B50D**

**.45 ACP** | MODEL: **T1B-14** (16.5" Barrel)

- ▶ Detachable buttstock
- ▶ Available in both 18" barrel and 16.5" barrel
- ▶ Accepts both stick and drum magazines



• Shown T1B

The Thompson T1C "Commando" model features parkerized steel, an all wood stock, rear grip, and horizontal foregrip in a durable black finish.

The Thompson T1B model comes with a detachable buttstock and a vertical foregrip. The overall length is 41" but it becomes 31.5" when the buttstock is detached from the frame.

The Tommy Guns typically ship with one 20 rd stick magazine but, is also available with a 10 rd stick magazine or a drum magazine (100 rd, 50 rd, 10 rd) all of our models come with a beautiful, luxurious American Walnut stock and foregrip.



**COLLECTIBLE • LEGAL TO OWN**

Tommy Guns are prohibited in CT, MD, NY. Please check with your local law enforcement agencies.

**THOMPSON 1927A-1 | THOMPSON 1927A-1C**

Model	T1   T1100D   T150D   T1CH   T1D   T1DH   T110S   T110SH   T1B   T1-C   T1B100D   T1B50D   T1-14   T1B-14   T5 (Lightweight)   T5P (Lightweight)   T5100D (Lightweight)   T5P100D (Lightweight)   T3 (Lightweight)
Caliber	.45 ACP (T1, T1B, T1-C, T1-14, T1B-14, T5)   .22 LR (T3)
Barrel	18", Finned / 1 in 16 right hand twist (T1, T1B, T1-C, T5)   16.5", Finned / 1 in 16 right hand twist (T1-14, T1B-14)   16.1", Finned (T3)
Material	Steel (T1, T1B, T1-C, T1-14, T1B-14)   Aluminum Alloy (T5)   Glass Fiber Reinforced Polymer (T3)
Length	41" overall (T1, T1B, T1-C, T5)   39" overall (T1-14, T1B-14)   36" overall (T3)
Weight	13 lbs. (T1, T1B, T1-C)   12.5 lbs. (T1-14, T1B-14)   9.5 lbs. (T5)   8.05 lbs. (T5P)   5.2 lbs. (T3)
Sights	Pinned in Front Blade, Open Rear Adjustable   Pinned in Front Blade, Fixed Battle Rear (T5, T5P)   Pinned in Front Blade, Fixed Battle Rear & Picatinny Rear Rail (T3)
Stock	Walnut Fixed Stock and Vertical Foregrip (T1, T1B, T1-14, T1B-14, T5)   Walnut Fixed Stock and Horizontal Foregrip (T1DH, T110SH)   Black Finish Stock and Horizontal Foregrip (T1-C)   Walnut Grain Polymer Furniture (T5P, T3)
Magazines	20 Rd Stick (T1, T1B, T1CH, T1-C, T5, T5P)   100 Rd Drum & 20 Rd Stick (T1100D, T1B100D, T5100D, T5P100D)   50 Rd Drum & 20 Rd Stick (T150D, T1B50D)   10 Rd Drum (T1D)     10 Rd Stick (T110S, T110SH, T3)
Warranty	1 Year



## Thompson® M1 M1-C (Lightweight)

**.45 ACP** | MODEL: **TM1 / TM1C / TM110S**

- ▶ Will not accept drum magazines
- ▶ Available in both steel and aluminum receiver

The Thompson M1 was used victoriously in battles throughout the world, inscribing its place for all times as a legend among military firearms. The semi-automatic Auto-Ordnance M1 Series rifles offer the same attention to craftsmanship that made the original so highly regarded. The look and feel are authentic, right down to the side charging handle. Both frame and receiver are made from solid steel or aluminum, the wood is genuine American Walnut, and the overall finish is a blued steel or black anodized aluminum.



• Shown TM1

### THOMPSON M1 | THOMPSON M1-C

	THOMPSON M1   THOMPSON M1-C
Model	TM1   TM1C (Lightweight)   TM110S
Caliber	.45 ACP (TM1, TM1C)
Barrel	16.5", Smooth / 1 in 16 right hand twist
Material	Steel (TM1)   Aluminum Alloy (TM1C)
Length	38" overall
Weight	11.5 lbs. (TM1)   9 lbs. (TM1C)
Sights	Pinned In Front Blade, Fixed Battle Rear
Stock	Walnut Fixed Stock and Horizontal Foregrip
Magazines	30 Rd Stick Magazine (TM1, TM1C)   10 Rd Stick Magazine (TM110S)
Warranty	1 Year

MADE WITH PRIDE IN THE U.S.A.



THOMPSON PISTOLS THOMPSON



### Thompson® PISTOL

<b>.45 ACP</b>	MODEL: <b>TA5</b>	with 50 round drum magazine
<b>.45 ACP</b>	MODEL: <b>TA5100D</b>	with 100 round drum magazine
<b>.45 ACP</b>	MODEL: <b>TA510D</b>	with 10 round drum magazine

- ▶ Barrel: 10.5" , 1-16 right hand twist
- ▶ Length O/A: 23.3"
- ▶ Weight: 5 lbs. 14.5 oz.
- ▶ Sight: Pinned in front blade, Fixed battle rear
- ▶ Construction: Aluminum
- ▶ Grips: Walnut, Horizontal foregrip
- ▶ Operation: Blow back, Fires from a closed bolt
- ▶ Magazine: 50 round drum (TA5) | 100 round drum (TA5100D) | 10 round drum (TA510D)
- ▶ Warranty: 1 year
- ▶ Accepts both stick and drum magazines



After a long hiatus and great demand, the Thompson Pistol has returned to the market! The Thompson Deluxe Pistol TA5 is lightweight, with a 10.5" barrel length and a walnut horizontal foregrip. Included is one of our most famous accessories, a 50 round drum magazine or you can opt for a 30 round stick magazine, a 10 round drum magazine, or a 100 round drum magazine.



Legal in MA, NJ with 10 round drum magazine. Thompson Pistols are prohibited in CT, MD, NY. Please check with your local law enforcement agencies.

PLEASE STAND BY



WASTELANDER

CUSTOM THOMPSON

### ONLY 25 MADE



The Wastelander Thompson is a custom-built firearm designed for the most rugged survivors of the post-apocalyptic landscape. This exclusive carbine is a testament to resilience and a powerful tool for navigating the challenges of the new world as imaged by gamers and fans of the latest in sci-fi television!

#### SPECIFICATIONS:

- ▶ Barrel: 16.5" Finned (18.5" with Compensator)
- ▶ Material: Steel - Built to last in the harshest environments
- ▶ Length: 41" Overall
- ▶ Weight: 13 lbs. - Not too light, not too heavy. Enough to feel the power in your hands.
- ▶ Sights: Blade Front, Open Rear Adjustable - Aim true, or don't aim at all.
- ▶ Stock: Walnut Fixed Stock & Vertical Foregrip - Classic Comfort, but built for the rough road ahead.

MODEL: T150DC8

.45 ACP | 50 RD Drum & 20 RD Stick



# WASTELANDER THOMPSON



Koted Arms is a one stop custom shop that can elevate your gear with original artwork, laser engraving, and professional Cerakote finishes. From classic battle worn camo to intricate custom artwork, they offer a vast selection of colors, patterns, and textures to match your unique style. Visit [www.kotedarms.com](http://www.kotedarms.com) to unleash your dreams.

MADE WITH PRIDE IN THE U.S.A.

Auto-Ordnance

- ▶ Barrel: 29" Barrel w/ 1:15 Twist, High Efficiency Muzzle Brake
- ▶ Length: 61"
- ▶ Weight: 25.5 lbs
- ▶ Stock: Magpul® PRS Gen 3 precision adjustable stock, MOE+ grip
- ▶ Magazine: Barrett® M107A1, 10 round
- ▶ Timney® AR style Trigger, Ambi-Safety, Accu-Tac® Bipod
- ▶ Thompson® Bullet Logo custom engraved on lower receiver and muzzle brake
- ▶ Ships with custom hardcase equipped with wheels



• Shown TAO50FDEFS

The Thompson® TAO50 in .50 BMG, manufactured by Auto-Ordnance®, is not just a rifle; it's a tool for dominance over the opposition. Crafted with precision and engineered for power, this bolt-action behemoth is a testament to American ingenuity. Our patent-pending roller bearing bolt and muzzle brake designs, coupled with a rugged black or Flat Dark Earth anodized finish, ensures durability and perfect performance.

With a precision 29" barrel boasting a 1:15 twist rate and a high-efficiency muzzle brake, the TAO50 delivers unmatched accuracy and recoil management. Barrel muzzle end threads are 1"-14. The Barrett® M107 muzzle brake or suppressor should not be used on the TAO50, as it is not rated for bolt-action rifles. However, other suppressor manufacturers such as Innovative Arms®, Elite Iron®, B&T®, and HUXWRX® utilize 1"-14 threads. Note that recoil will increase when not using the TAO50 muzzle brake.

The TAO50 is now available in a .416 Barrett model. For the .50 BMG model, two stock options are offered. The fixed stock TAO50 comes with a Magpul® PRS Gen 3 stock, MOE+® grip, and Timney® AR-style trigger, providing unparalleled comfort, control, and ease of shooting. Equipped with an Accu-Tac® bipod for unwavering stability, this rifle is a sharpshooter's dream. It weighs in at 25.5 lbs, with an overall length of 61". The classic Thompson "bullet" logo is engraved on the lower receiver and top of the muzzle brake. The TAO50 is also available with an aluminum folding stock, featuring an integrated monopod. This model weighs 27.5 lbs, with all other features included on the fixed stock model. The folding stock allows for ease of storage and vehicle access.

Designed for maximum versatility, the TAO50 features accessory and optics rails, allowing for customization to suit any mission. The included Barrett® M107A1 10-round black magazine ensures you're always prepared. Packed in a custom hard case equipped with wheels, the TAO50 is ready to conquer any terrain. This is not just a rifle; it's complete domination of anything in range.



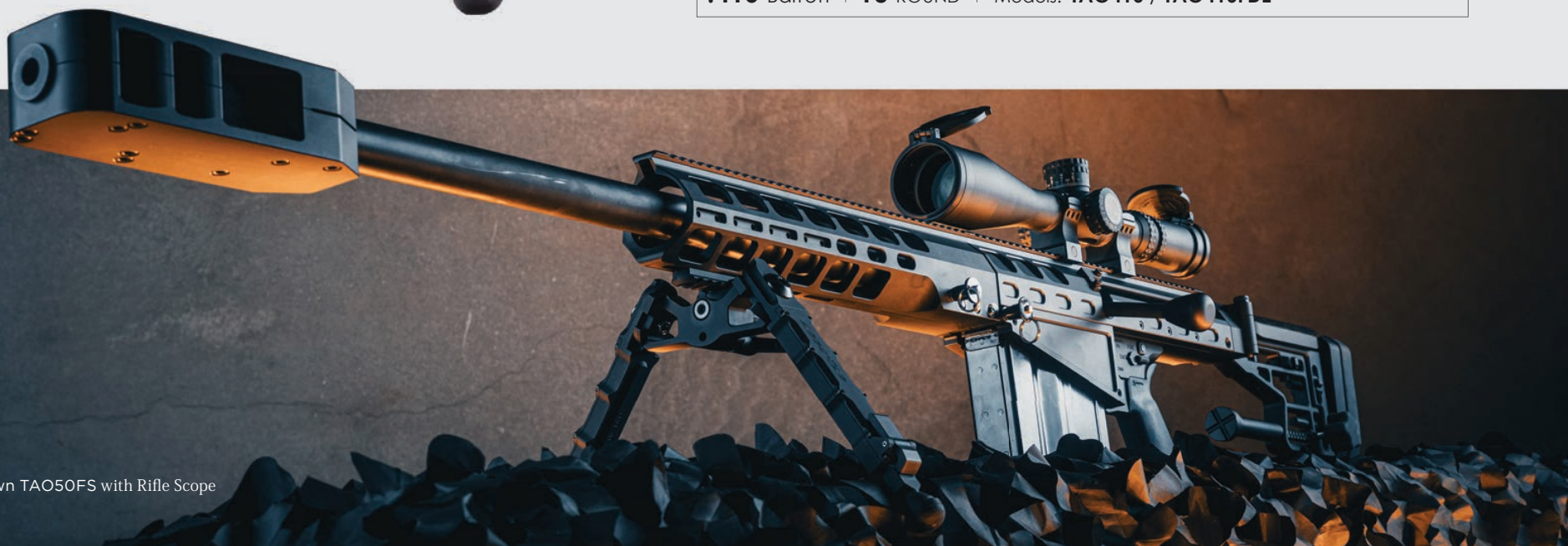


## Thompson® .50 BMG TAO50®



**.50** BMG | **10** ROUND | Models: **TAO50** / **TAO50FDE** / **TAO50FS** / **TAO50FDEFS**

**.416** Barrett | **10** ROUND | Models: **TAO416** / **TAO416FDE**



• Shown TAO50FS with Rifle Scope



Auto-Ordinance®  
M1 .30 CALIBER CARBINES

**.30** CALIBER | MODEL: **AOM130**

- ▶ Barrel: 18"
- ▶ Length O/A: 35.75"
- ▶ Weight: 5.4 lbs
- ▶ Sight: Blade front sight, Flip style rear sight
- ▶ Stock: Walnut stock and handguard
- ▶ Magazine: One 15 round
- ▶ Warranty: 1 year



The Auto-Ordinance M1 .30 Caliber carbine is produced in Kahr's state-of-the-art manufacturing plant in Greeley, PA. The Auto-Ordinance carbines are produced using newly manufactured parts on high precision computerized machinery.

CA & NY APPROVED

**.30** CALIBER | MODEL: **AOM140** ●

- ▶ Ships with one 10 round magazine for CA & NY sales
- ▶ Warranty: 1 year

Markings include the following: Auto-Ordinance, Greeley, PA behind the rear sight; U.S. Carbine, Cal. 30 ML on the receiver in front of the bolt and the serial number is engraved on the left side of the receiver.



Auto-Ordinance®  
"PARATROOPER FOLDING STOCK"

**.30** CALIBER | MODEL: **AOM150**

- ▶ Barrel: 18"
- ▶ Length O/A: 35.75" overall, 25.75" (folded)
- ▶ Weight: 5 lbs. 6 oz.
- ▶ Sight: Blade front sight, Flip style rear sight
- ▶ Stock: Walnut folding stock and wood handguard
- ▶ Magazine: One 15 round
- ▶ Warranty: 1 year



COLLECTIBLE • LEGAL TO OWN • SHIPPED WITH (1) 15 ROUND NEW MAGAZINE • SHIPPED WITH (1) 10 ROUND NEW MAGAZINE FOR CA & NY SALES  
Not legal in NJ. Please check with your local law enforcement agencies.

● CA/NY Compliant Models Available

# Auto-Ordnance® 1911A-1

The Auto-Ordnance 1911A1 Series incorporates GI specs, and features a matte black finished frame, barrel, and slide. The precision manufactured, carbon steel slide, sear, and disconnecter are heat treated properly for durability over many thousands of rounds. Models are available in .45 ACP and 9mm. Barrel lengths are offered in the original 5", and the Commander length is 4.25". The low-profile sights feature a blade front sight and a rear drift adjustable for windage. The grip is brown checkered plastic, with wood optional on 1911BKOW models.

The Auto-Ordnance 1911A-1 is 100% made in the USA.



• Shown  
1911BKOW

**.45 ACP** | MODEL: 1911BKOW ● ●

**.45 ACP** | MODEL: 1911BKOCW ●

**9 MM** | MODEL: 1911BKO9W

- ▶ Barrel: 5" (1911BKOW), 4.25" (1911BKOCW)
- ▶ Length O/A: 8.64" (1911BKOW), 7.9" (1911BKOCW), 7.5" (1911BKO9W)
- ▶ Weight: 2.2 lbs. (1911BKOCW), 2.3 lbs. (1911BKOW), 2.4 lbs. (1911BKO9W)
- ▶ Sight: Blade front, Rear drift adjustable for windage
- ▶ Construction: 4140 steel frame casting and 4140 solid steel slide
- ▶ Grips: Checkered wood with U.S. logo
- ▶ Magazine: 7 round (1911BKOW/1911BKOCW), 9 round (1911BKO9W)
- ▶ Warranty: 1 year
- ▶ Ships with one magazine



• Shown  
1911BKO

**.45 ACP** | MODEL: 1911BKO ● ●

**.45 ACP** | MODEL: 1911BKOC ●

**9 MM** | MODEL: 1911BKO9

- ▶ Barrel: 5" (1911BKO), 4.25" (1911BKOC)
- ▶ Length O/A: 8.64" (1911BKO), 7.9" (1911BKOC), 7.5" (1911BKO9)
- ▶ Weight: 2.2 lbs. (1911BKOC), 2.3 lbs. (1911BKO), 2.4 lbs. (1911BKO9)
- ▶ Sight: Blade front, Rear drift adjustable for windage
- ▶ Construction: 4140 steel frame casting and 4140 solid steel slide
- ▶ Grips: Brown checkered plastic
- ▶ Magazine: 7 round (1911BKO/1911BKOC), 9 round (1911BKO9)
- ▶ Warranty: 1 year
- ▶ Ships with one magazine

**Commander**  
1911BKOC/1911BKOWC  
4.25" Barrel

## CUSTOM 1911 WINGED WARRIORS SERIES



**BLACK SHEEP**  
MODEL: 1911BKOC14

Soar high with the Auto-Ordnance Winged Warriors "Black Sheep" 1911! Created with Altered Arsenal, this limited-edition pistol honors the fearless WWII Pacific pilots. Featuring engraved F4U Corsair artwork, custom Blue, White, and Red Cerakote, and authentic rivet textures, this .45 ACP 1911 blends history, artistry, and performance—a striking tribute to aviation heroes and America's Greatest Generation.



**RED TAILS**  
MODEL: 1911BKOC18

Honor the legacy of the Tuskegee Airmen with the Auto-Ordnance Winged Warriors "Red Tails 1911." Inspired by the P-51C Mustang, it features detailed Cerakote artwork, authentic squadron markings, and engraved hardwood grips. Chambered in .45 ACP, this limited-edition pistol embodies courage, craftsmanship, and the enduring spirit of America's legendary WWII aviators.



**MEMPHIS BELLE**  
MODEL: 1911BKOC19

Celebrate the legacy of the "Memphis Belle" with the Auto-Ordnance Winged Warriors 1911, inspired by the legendary B-17F Flying Fortress. Featuring OD Green Cerakote, authentic WWII markings, and pin-up girl artwork grips, this .45 ACP pistol honors the valor of America's airmen and reimagines aviation history in a beautifully crafted collector's masterpiece.



Kahr Firearms Group and Altered Arsenal have partnered together on the design concept and promotion of this product, and several other custom firearm projects. Altered Arsenal, based out of West Monroe, Louisiana, has seen substantial growth in the last few years. They are changing the firearm industry with custom designs and innovations. Visit [alteredarsenal.com](http://alteredarsenal.com) to unleash your dreams.

MADE WITH PRIDE IN THE U.S.A.



## HISTORY OF MAGNUM RESEARCH

Due to our loyal customers, suppliers, dedicated employees, and highly experienced leadership, Magnum Research Inc.® (MRI) has been highly successful since its purchase by Kahr Firearms Group in 2010. Magnum Research's founders, Jim Skildum and John Risdall, had been involved with the company since 1979. Both men oversaw the ascent of the Desert Eagle® Pistol from a concept on paper to a pop culture icon, it has been commonly seen in movies, television, and video games. Over the past 40 years MRI continually improved and expanded the Desert Eagle pistol series. It was originally manufactured in Israel by Israel Military Industries but MRI moved production to their factory in Pillager, MN in 2009. Besides offering the basic black finish, MRI has developed a line-up of the Desert Eagle pistols in a number of distinctive and appealing finishes, including stainless steel, black, "Tiger Stripe", and a variety of modern cerakote finishes. The Desert Eagle is currently produced in four magnum calibers.



## POLISHED CHROME



**.50 AE** | MODEL: **DE50PC**

**.44 MAGNUM** | MODEL: **DE44PC**

**.357 MAGNUM** | MODEL: **DE357PC**

- ▶ Barrel: 6"
- ▶ Length O/A: 10.75"
- ▶ Height: 6.25"
- ▶ Slide Width: 1.25"
- ▶ Weight: 4 lbs. 6 oz. (DE50PC), 4 lbs. 7 oz. (DE44PC), 4 lbs. 9 oz. (DE357PC)
- ▶ Sight: Combat type, Fixed
- ▶ Finish: Polished Chrome
- ▶ Magazine: 7 rd (DE50PC), 8 rd (DE44PC), 9 rd (DE357PC)

## BURNT BRONZE



**.50 AE** | MODEL: **DE50BB**

**.44 MAGNUM** | MODEL: **DE44BB**

- ▶ Barrel: 6"
- ▶ Length O/A: 10.75"
- ▶ Height: 6.25"
- ▶ Slide Width: 1.25"
- ▶ Weight: 4 lbs. 6 oz. (DE50BB), 4 lbs. 7 oz. (DE44BB)
- ▶ Sight: Combat type, Fixed
- ▶ Finish: Burnt Bronze Cerakote™
- ▶ Magazine: 7 rd (DE50BB), 8 rd (DE44BB)



Walnut Grips w/ Gold Eagle Logo + Hogue® Rubber Grips w/ Finger Grooves

## CASE HARDENED

**.50 AE** | MODEL: **DE50CH**

**.44 MAGNUM** | MODEL: **DE44CH**

**.357 MAGNUM** | MODEL: **DE357CH**

- ▶ Barrel: 6"
- ▶ Length O/A: 10.75"
- ▶ Height: 6.25"
- ▶ Slide Width: 1.25"
- ▶ Weight: 4 lbs. 6 oz. (DE50CH), 4 lbs. 7 oz. (DE44CH), 4 lbs. 9 oz. (DE357CH)
- ▶ Sight: Combat type, Fixed
- ▶ Finish: Case Hardened Finish
- ▶ Magazine: 7 rd (DE50CH), 8 rd (DE44CH), 9 rd (DE357CH)

## BLACK w / INTEGRAL MUZZLE BRAKE



**.50 AE** | MODEL: **DE50IMB**

**.44 MAGNUM** | MODEL: **DE44IMB**

**.357 MAGNUM** | MODEL: **DE357IMB**

- ▶ Barrel: 6"
- ▶ Length O/A: 10.75"
- ▶ Height: 6.25"
- ▶ Slide Width: 1.25"
- ▶ Weight: 4 lbs. 6 oz. (DE50IMB), 4 lbs. 7 oz. (DE44IMB), 4 lbs. 9 oz. (DE357IMB)
- ▶ Sight: Combat type, Fixed
- ▶ Finish: Black Oxide
- ▶ Magazine: 7 rd (DE50IMB), 8 rd (DE44IMB), 9 rd (DE357IMB)

## GOLD ZIRCONIUM NITRIDE

**.50 AE** | MODEL: **DE50ZNG, DE50ZNBK**



DE50ZNBK  
Black Appointments

DE50ZNG

- ▶ Barrel: 6"
- ▶ Length O/A: 10.75"
- ▶ Height: 6.25"
- ▶ Slide Width: 1.25"
- ▶ Weight: 4 lbs. 6 oz.
- ▶ Sight: Combat type, Fixed
- ▶ Finish: Gold Zirconium Nitride
- ▶ Magazine: 7 rd

NEW PRODUCTS  
2026

## TITANIUM GOLD



**.50 AE** | MODEL: **DE50TG**

**.44 MAGNUM** | MODEL: **DE44TG**

**.357 MAGNUM** | MODEL: **DE357TG**

- ▶ Barrel: 6"
- ▶ Length O/A: 10.75"
- ▶ Height: 6.25"
- ▶ Slide Width: 1.25"
- ▶ Weight: 4 lbs. 6 oz. (DE50TG), 4 lbs. 7 oz. (DE44TG), 4 lbs. 9 oz. (DE357TG)
- ▶ Sight: Combat type, Fixed
- ▶ Finish: Bright Titanium Gold
- ▶ Magazine: 7 rd (DE50TG), 8 rd (DE44TG), 9 rd (DE357TG)

## TIGER STRIPE



**.50 AE** | MODEL: **DE50TG-TS**

**.44 MAGNUM** | MODEL: **DE44TG-TS**

**.357 MAGNUM** | MODEL: **DE357TG-TS**

- ▶ Barrel: 6"
- ▶ Length O/A: 10.75"
- ▶ Height: 6.25"
- ▶ Slide Width: 1.25"
- ▶ Weight: 4 lbs. 6 oz. (DE50TG-TS), 4 lbs. 7 oz. (DE44TG-TS), 4 lbs. 9 oz. (DE357TG-TS)
- ▶ Sight: Combat type, Fixed
- ▶ Finish: Tiger Stripe Pattern
- ▶ Magazine: 7 rd (DE50TG-TS), 8 rd (DE44TG-TS), 9 rd (DE357TG-TS)

## BRUSHED CHROME



**.50 AE** | MODEL: **DE50BC**

**.44 MAGNUM** | MODEL: **DE44BC**

**.357 MAGNUM** | MODEL: **DE357BC**

- ▶ Barrel: 6"
- ▶ Length O/A: 10.75"
- ▶ Height: 6.25"
- ▶ Slide Width: 1.25"
- ▶ Weight: 4 lbs. 6 oz. (DE50BC), 4 lbs. 7 oz. (DE44BC), 4 lbs. 9 oz. (DE357BC)
- ▶ Sight: Combat type, Fixed
- ▶ Finish: Brushed Chrome
- ▶ Magazine: 7 rd (DE50BC), 8 rd (DE44BC), 9 rd (DE357BC)

## BLACK



**.50 AE** | MODEL: **DE50**

**.44 MAGNUM** | MODEL: **DE44**

**.357 MAGNUM** | MODEL: **DE357**

- ▶ Barrel: 6"
- ▶ Length O/A: 10.75"
- ▶ Height: 6.25"
- ▶ Slide Width: 1.25"
- ▶ Weight: 4 lbs. 6 oz. (DE50), 4 lbs. 7 oz. (DE44), 4 lbs. 9 oz. (DE357)
- ▶ Sight: Combat type, Fixed
- ▶ Finish: Black Oxide
- ▶ Magazine: 7 rd (DE50), 8 rd (DE44), 9 rd (DE357)

## BLACK TIGER STRIPE



**.50 AE** | MODEL: **DE50BTS**

**.44 MAGNUM** | MODEL: **DE44BTS**

- ▶ Barrel: 6"
- ▶ Length O/A: 10.75"
- ▶ Height: 6.25"
- ▶ Slide Width: 1.25"
- ▶ Weight: 4 lbs. 6 oz. (DE50BTS), 4 lbs. 7 oz. (DE44BTS)
- ▶ Sight: Combat type, Fixed
- ▶ Finish: Black with Tiger Stripe Pattern
- ▶ Magazine: 7 rd (DE50BTS), 8 rd (DE44BTS)

## CARBO BLUE



**.50 AE** | MODEL: **DE50CBG**

- ▶ Barrel: 6"
- ▶ Length O/A: 10.75"
- ▶ Height: 6.25"
- ▶ Slide Width: 1.25"
- ▶ Weight: 4 lbs. 6 oz.
- ▶ Sight: Titanium Gold Plated, Combat type, Fixed
- ▶ Finish: Blue Carbon PVD
- ▶ Magazine: 7 rd



ALUMINUM FRAME

### BLACK SLIDE (L6)

**.50 AE** | MODEL: **DE50L6IMB**

**.44 MAGNUM** | MODEL: **DE44L6IMB**

**.357 MAGNUM** | MODEL: **DE357L6IMB**

- ▶ Barrel: 6"
- ▶ Length O/A: 10.75"
- ▶ Height: 6.25"
- ▶ Slide Width: 1.25"
- ▶ Weight: 3 lbs. 11 oz. (DE50L6IMB), 3 lbs. 12 oz. (DE44L6IMB), 3 lbs. 13 oz. (DE357L6IMB)
- ▶ Sight: Combat type, Fixed
- ▶ Finish: Black Hard Coat Alloy Frame, Black Steel Slide and Barrel w/ Integral Muzzle Brake
- ▶ Magazine: 7 rd (DE50L6IMB), 8 rd (DE44L6IMB), 9 rd (DE357L6IMB)



ALUMINUM FRAME

### MIL SPEC GREEN (L6)

**.50 AE** | MODEL: **DE50L6MSG**

**.44 MAGNUM** | MODEL: **DE44L6MSG**

**.357 MAGNUM** | MODEL: **DE357L6MSG**

- ▶ Barrel: 6"
- ▶ Length O/A: 10.75"
- ▶ Height: 6.25"
- ▶ Slide Width: 1.25"
- ▶ Weight: 3 lbs. 11 oz. (DE50L6MSG), 3 lbs. 12 oz. (DE44L6MSG), 3 lbs. 13 oz. (DE357L6MSG)
- ▶ Sight: Combat type, Fixed
- ▶ Finish: Black Hard Coat Alloy Frame, Mil Spec Green Cerakote Slide and Barrel w/ Gold Appointments
- ▶ Magazine: 7 rd (DE50L6MSG), 8 rd (DE44L6MSG), 9 rd (DE357L6MSG)



ALUMINUM FRAME

### BLACK & GOLD (L6)

**.50 AE** | MODEL: **DE50BATG**

**.44 MAGNUM** | MODEL: **DE44BATG**

- ▶ Barrel: 6"
- ▶ Length O/A: 10.75"
- ▶ Height: 6.25"
- ▶ Slide Width: 1.25"
- ▶ Weight: 3 lbs. 11 oz. (DE50BATG), 3 lbs. 12 oz. (DE44BATG)
- ▶ Sight: Combat type, Fixed
- ▶ Finish: Black Hard Coat Alloy Frame, Matte Black Carbon Steel Slide and Titanium Gold Plated Barrel w/ Gold Appointments
- ▶ Magazine: 7 rd (DE50BATG), 8 rd (DE44BATG)



ALUMINUM FRAME

### BURNT BRONZE (L6)

**.50 AE** | MODEL: **DE50L6BB**

**.44 MAGNUM** | MODEL: **DE44L6BB**

**.357 MAGNUM** | MODEL: **DE357L6BB**

- ▶ Barrel: 6"
- ▶ Length O/A: 10.75"
- ▶ Height: 6.25"
- ▶ Slide Width: 1.25"
- ▶ Weight: 3 lbs. 11 oz. (DE50L6BB), 3 lbs. 12 oz. (DE44L6BB), 3 lbs. 13 oz. (DE357L6BB)
- ▶ Sight: Combat type, Fixed
- ▶ Finish: Black Hard Coat Alloy Frame, Burnt Bronze Cerakote Slide and Barrel w/ Black Appointment
- ▶ Magazine: 7 rd (DE50L6BB), 8 rd (DE44L6BB), 9 rd (DE357L6BB)



ALUMINUM FRAME

### STAINLESS SLIDE (L6)

**.50 AE** | MODEL: **DE50ASIMB**

**.44 MAGNUM** | MODEL: **DE44ASIMB**

**.357 MAGNUM** | MODEL: **DE357ASIMB**

- ▶ Barrel: 6"
- ▶ Length O/A: 10.75"
- ▶ Height: 6.25"
- ▶ Slide Width: 1.25"
- ▶ Weight: 3 lbs. 11 oz. (DE50ASIMB), 3 lbs. 12 oz. (DE44ASIMB), 3 lbs. 13 oz. (DE357ASIMB)
- ▶ Sight: Combat type, Fixed
- ▶ Finish: Black Hard Coat Alloy Frame, Stainless Steel Slide and Barrel w/ Black Appointments
- ▶ Magazine: 7 rd (DE50ASIMB), 8 rd (DE44ASIMB), 9 rd (DE357ASIMB)



ALUMINUM FRAME

### CARBO BLUE (L6)

**.50 AE** | MODEL: **DE50L6CBG**

**.44 MAGNUM** | MODEL: **DE44L6CBG**

**.357 MAGNUM** | MODEL: **DE357L6CBG**

- ▶ Barrel: 6"
- ▶ Length O/A: 10.75"
- ▶ Height: 6.25"
- ▶ Slide Width: 1.25"
- ▶ Weight: 3 lbs. 11 oz. (DE50L6CBG), 3 lbs. 12 oz. (DE44L6CBG), 3 lbs. 13 oz. (DE357L6CBG)
- ▶ Sight: Combat type, Fixed
- ▶ Finish: Black Hard Coat Alloy Frame, Blue Carbon PVD Slide and Barrel w/ Gold Appointments
- ▶ Magazine: 7 rd (DE50L6CBG), 8 rd (DE44L6CBG), 9 rd (DE357L6CBG)

## MIL SPEC GREEN (L5)



ALUMINUM FRAME  
NY APPROVED

**.50 AE** | MODEL: **DE50L5MSG**

**.44 MAGNUM** | MODEL: **DE44L5MSG**

**.357 MAGNUM** | MODEL: **DE357L5MSG**

- ▶ Barrel: 5"
- ▶ Length O/A: 9.69"
- ▶ Height: 6.25"
- ▶ Slide Width: 1.25"
- ▶ Weight: 3 lbs. 0.6 oz. (DE50L5MSG), 3 lbs. 1 oz. (DE44L5MDG), 3 lbs. 1.6 oz. (DE357L5MSG)
- ▶ Sight: Combat type, Fixed
- ▶ Finish: Black Hard Coat Alloy Frame, Mil Spec Green Cerakote Slide and Barrel w/ Gold Appointments
- ▶ Magazine: 7 rd (DE50L5MSG), 8 rd (DE44L5MSG), 9 rd (DE357L5MSG)

NEW YORK OK

## BURNT BRONZE (L5)



ALUMINUM FRAME  
NY APPROVED

**.50 AE** | MODEL: **DE50L5BB**

**.44 MAGNUM** | MODEL: **DE44L5BB**

**.357 MAGNUM** | MODEL: **DE357L5BB**

- ▶ Barrel: 5"
- ▶ Length O/A: 9.69"
- ▶ Height: 6.25"
- ▶ Slide Width: 1.25"
- ▶ Weight: 3 lbs. 0.6 oz. (DE50L5BB), 3 lbs. 1 oz. (DE44L5BB), 3 lbs. 1.6 oz. (DE357L5BB)
- ▶ Sight: Combat type, Fixed
- ▶ Finish: Black Hard Coat Alloy Frame, Burnt Bronze Cerakote Slide and Barrel w/ Black Appointment
- ▶ Magazine: 7 rd (DE50L5BB), 8 rd (DE44L5BB), 9 rd (DE357L5BB)

NEW YORK OK

## CARBO BLUE (L5)



ALUMINUM FRAME  
NY APPROVED

**.50 AE** | MODEL: **DE50L5CBG**

**.44 MAGNUM** | MODEL: **DE44L5CBG**

**.357 MAGNUM** | MODEL: **DE357L5CBG**

- ▶ Barrel: 5"
- ▶ Length O/A: 9.69"
- ▶ Height: 6.25"
- ▶ Slide Width: 1.25"
- ▶ Weight: 3 lbs. 0.6 oz. (DE50L5CBG), 3 lbs. 1 oz. (DE44L5CBG), 3 lbs. 1.6 oz. (DE357L5CBG)
- ▶ Sight: Combat type, Fixed
- ▶ Finish: Black Hard Coat Alloy Frame, Blue Carbon PVD Slide and Barrel w/ Gold Appointments
- ▶ Magazine: 7 rd (DE50L5CBG), 8 rd (DE44L5CBG), 9 rd (DE357L5CBG)

NEW YORK OK

## THE ICONIC DESERT EAGLE PLATFORM

The entire Mark XIX Component System is based on a single platform and is the heart of the Desert Eagle. Once you've purchased a Mark XIX Desert Eagle Pistol, you can change the barrel length or the caliber in seconds using caliber conversion components. The Mark XIX Desert Eagle Pistol offers true interchangeability between four magnum calibers: .357 Magnum, .44 Magnum, .429 DE or .50 A.E. Owning a Desert Eagle means owning an American icon!



## BLACK (L5)



ALUMINUM FRAME  
NY APPROVED

**.50 AE** | MODEL: **DE50L5IMB**

**.44 MAGNUM** | MODEL: **DE44L5IMB**

**.357 MAGNUM** | MODEL: **DE357L5IMB**

- ▶ Barrel: 5"
- ▶ Length O/A: 9.69"
- ▶ Height: 6.25"
- ▶ Slide Width: 1.25"
- ▶ Weight: 3 lbs. 0.6 oz. (DE50L5IMB), 3 lbs. 1 oz. (DE44L5IMB), 3 lbs. 1.6 oz. (DE357L5IMB)
- ▶ Sight: Combat type, Fixed
- ▶ Finish: Black Hard Coat Alloy Frame, Black Steel Slide and Barrel w/ Integral Muzzle Brake
- ▶ Magazine: 7 rd (DE50L5IMB), 8 rd (DE44L5IMB), 9 rd (DE357L5IMB)

NEW YORK OK

## BRUSHED CHROME (L5)



ALUMINUM FRAME  
NY APPROVED

**.50 AE** | MODEL: **DE50L5BC**

**.44 MAGNUM** | MODEL: **DE44L5BC**

**.357 MAGNUM** | MODEL: **DE357L5BC**

- ▶ Barrel: 5"
- ▶ Length O/A: 9.69"
- ▶ Height: 6.25"
- ▶ Slide Width: 1.25"
- ▶ Weight: 3 lbs. 0.6 oz. (DE50L5BC), 3 lbs. 1 oz. (DE44L5BC), 3 lbs. 1.6 oz. (DE357L5BC)
- ▶ Sight: Combat type, Fixed
- ▶ Finish: Black Hard Coat Alloy Frame, Brushed Chrome Slide and Barrel w/ Integral Muzzle Brake
- ▶ Magazine: 7 rd (DE50L5BC), 8 rd (DE44L5BC), 9 rd (DE357L5BC)

NEW YORK OK

MADE WITH PRIDE IN THE U.S.A.



## WHITE TIGER STRIPE



<b>.50 AE</b>	MODEL: <b>DE50WTS</b>
<b>.44 MAGNUM</b>	MODEL: <b>DE44WTS</b>

- ▶ Barrel: 6"
- ▶ Length O/A: 10.75"
- ▶ Height: 6.25"
- ▶ Slide Width: 1.25"
- ▶ Weight: 4 lbs. 7 oz. (DE50WTS), 4 lbs. 8 oz. (DE44WTS)
- ▶ Sight: Combat type, Fixed
- ▶ Finish: Stainless Steel with Tiger Stripe Pattern
- ▶ Magazine: 7 rd (DE50WTS), 8 rd (DE44WTS)

## STAINLESS



<b>.50 AE</b>	MODEL: <b>DE50SRMB</b>
<b>.44 MAGNUM</b>	MODEL: <b>DE44SRMB</b>
<b>.357 MAGNUM</b>	MODEL: <b>DE357SRMB</b>

- ▶ Barrel: 6"
- ▶ Length O/A: 10.75"
- ▶ Height: 6.25"
- ▶ Slide Width: 1.25"
- ▶ Weight: 4 lbs. 7 oz. (DE50SRMB), 4 lbs. 8 oz. (DE44SRMB), 4 lbs. 10 oz. (DE357SRMB)
- ▶ Sight: Combat type, Fixed
- ▶ Finish: Brushed Stainless Steel
- ▶ Magazine: 7 rd (DE50SRMB), 8 rd (DE44SRMB), 9 rd (DE357SRMB)



## THE MAGNUM RESEARCH FAMILY

MRI has expanded from the Desert Eagle to offer a family of exceptional products. The high quality MR1911 pistols come in a variety of calibers and configurations, all manufactured by BUL in Israel. The BFR (Biggest Finest Revolver), is an MRI original design, manufactured at the Minnesota factory. This series of all stainless steel, single action revolvers are available both off the shelf or custom with numerous calibers and two cylinder sizes. The SwitchBolt rimfire rifles in .22LR and .22WMR feature numerous options including lightweight graphite barrels, the aluminum tension barrel, and the new integrally suppressed TTS model. Magnum Research also produces precision bolt action rifles called the Mountain Eagle. Chambered in a variety of centerfire calibers, they are custom made to order on a Remington® 700 style action made by Defiance Machine featuring our patented carbon fiber barrel and a variety of stock options.



To Build Your Own, Visit [www.MagnumResearchCustoms.com](http://www.MagnumResearchCustoms.com)

# CUSTOM DESERT EAGLE



## DESERT EAGLE CA APPROVED MODELS

Magnum Research and Kahr Firearms Group remain dedicated to supporting the Second Amendment rights of California gun owners. The Desert Eagle pistol is available through dealers and distributors in California. The following model finishes are specifically approved: black, burnt bronze, tungsten, brushed chrome, and polished chrome. All California-approved Desert Eagles feature a fluted barrel with a two-slot Weaver-style accessory rail and are chambered in .44 Magnum. The pistols come with soft synthetic rubber grips emblazoned with the "Eagle" logo. All Desert Eagle pistols are made entirely in the United States.



### BLACK

**.44 MAGNUM** | MODEL: **DE44CA**

- ▶ Barrel: 6"
- ▶ Length O/A: 10.75"
- ▶ Height: 6.25"
- ▶ Slide Width: 1.25"
- ▶ Weight: 4 lbs. 6.6 oz.
- ▶ Sight: Combat type, Fixed
- ▶ Magazine Capacity: 8 rounds
- ▶ Finish: Black Oxide
- ▶ Magazine: 8 rd



### BRUSHED CHROME

**.44 MAGNUM** | MODEL: **DE44CABC**

- ▶ Barrel: 6"
- ▶ Length O/A: 10.75"
- ▶ Height: 6.25"
- ▶ Slide Width: 1.25"
- ▶ Weight: 4 lbs. 6.6 oz.
- ▶ Sight: Combat type, Fixed
- ▶ Magazine Capacity: 8 rounds
- ▶ Finish: Brushed Chrome
- ▶ Magazine: 8 rd



### TUNGSTEN

**.44 MAGNUM** | MODEL: **DE44CATU**

- ▶ Barrel: 6"
- ▶ Length O/A: 10.75"
- ▶ Height: 6.25"
- ▶ Slide Width: 1.25"
- ▶ Weight: 4 lbs. 6.6 oz.
- ▶ Sight: Combat type, Fixed
- ▶ Finish: Cerakote Tungsten, Dark Graphite Grey
- ▶ Magazine: 8 rd



### POLISHED CHROME

**.44 MAGNUM** | MODEL: **DE44CAPC**

- ▶ Barrel: 6"
- ▶ Length O/A: 10.75"
- ▶ Height: 6.25"
- ▶ Slide Width: 1.25"
- ▶ Weight: 4 lbs. 6.6 oz.
- ▶ Sight: Combat type, Fixed
- ▶ Finish: Polished Chrome
- ▶ Magazine: 8 rd



### BURNT BRONZE

**.44 MAGNUM** | MODEL: **DE44CABB**

- ▶ Barrel: 6"
- ▶ Length O/A: 10.75"
- ▶ Height: 6.25"
- ▶ Slide Width: 1.25"
- ▶ Weight: 4 lbs. 6.6 oz.
- ▶ Sight: Combat type, Fixed
- ▶ Magazine Capacity: 8 rounds
- ▶ Finish: Cerakote Burnt Bronze
- ▶ Magazine: 8 rd

# .429 DE



Shown with DEP429DE210JHP

# .50 AE



MODEL: DE50-429SRMB

Shown with DEP50JHP300B

## DESERT EAGLE COMBO CALIBER KIT

### STAINLESS



**.50 AE & .429 DE** | MODEL: **DE50-429SRMB**

- ▶ Barrel: 6"
- ▶ Length O/A: 10.75"
- ▶ Height: 6.25"
- ▶ Slide Width: 1.25"
- ▶ Weight: 4 lbs. 7 oz. (DE50SRMB), 4 lbs. 8.8 oz. (DE429SRMB)
- ▶ Sight: Combat type, Fixed
- ▶ Finish: Brushed Stainless Steel
- ▶ Magazines: two - 7 rd

### BLACK



**.50 AE & .429 DE** | MODEL: **DE50-429**

**.50 AE & .44 MAG** | MODEL: **DE50WB6**

- ▶ Barrel: 6"
- ▶ Length O/A: 10.75"
- ▶ Height: 6.25"
- ▶ Slide Width: 1.25"
- ▶ Weight: 4 lbs. 6 oz. (DE50), 4 lbs. 7.2 oz. (DE429), 4 lbs. 7 oz. (DE44)
- ▶ Sight: Combat type, Fixed
- ▶ Finish: Black Oxide
- ▶ Magazines: two - 7 rd (DE50-429), One - 7 rd & 8 rd (DE50WB6)

## DESERT EAGLE COMPONENT KIT



### MODEL: DEXIX6 (BLACK)

- ▶ DE50, 6" Barrel, 7 Rounds
- ▶ BAR446, .44 Magnum, 6" Barrel Black
- ▶ BAR3576, .357 Magnum, 6" Barrel Black
- ▶ .357 Magnum Bolt Assembly
- ▶ MAG44, 8 Rounds, .44 Magnum Magazine
- ▶ MAG357, 9 Rounds, .357 Magnum Magazine
- ▶ Shipped in Protective Case

DEXIX6



Desert Eagle interchangeable calibers, switching from one to the next in a matter of seconds.



### MODEL: DEXIX6BB (BURNT BRONZE)

- ▶ DE50BB, 6" Barrel, 7 Rounds
- ▶ BAR446BB, .44 Magnum, 6" Barrel Burnt Bronze
- ▶ BAR3576BB, .357 Magnum, 6" Barrel Burnt Bronze
- ▶ .357 Magnum Bolt Assembly
- ▶ MAG44, 8 Rounds, .44 Magnum Magazine
- ▶ MAG357, 9 Rounds, .357 Magnum Magazine
- ▶ Shipped in Protective Case

DEXIX6BB



### MODEL: DEXIX6SRMB (STAINLESS)

- ▶ DE50SRMB, 6" Barrel, 7 Rounds
- ▶ BAR446SRMB, .44 Magnum, 6" Barrel Stainless w/Integral Muzzle Brake
- ▶ BAR3576SRMB, .357 Magnum, 6" Barrel Stainless w/Integral Muzzle Brake
- ▶ .357 Magnum Bolt Assembly
- ▶ MAG44, 8 Rounds, .44 Magnum Magazine
- ▶ MAG357, 9 Rounds, .357 Magnum Magazine
- ▶ Shipped in Protective Case

DEXIX6SRMB

NEW PRODUCTS  
2026

**BFR**<sup>®</sup>  
BIGGEST FINEST REVOLVER



To Build Your Own, Visit [www.MagnumResearchCustoms.com](http://www.MagnumResearchCustoms.com)

Magnum Research's BFR is truly the biggest, finest revolver on the market today. Like the legendary Desert Eagle, it is entirely manufactured in the US and designed as a magnum from the ground up. The BFR is all stainless steel, with a precision grade barrel that delivers unmatched accuracy using lead or jacketed bullets. The BFR is the most powerful production single action handgun made, with numerous calibers and two frame sizes to choose from. Engineered for the hunt, the BFR can take everything from grouse to grizzly. Choose your chambering and frame size, then have your favorite gun dealer order the BFR for you.



Model	BFR357MAG	BFR44MAG		BFR454C	BFR480-475	BFR500JRH		BFR500LB
Caliber	.357 Magnum	.44 Magnum		.454 Casull	.480/.475 Linebaugh	.500 JRH		.500 Linebaugh
Barrel	7.5"	7.5"	5"	6.5"	7.5"	7.5"	5.5"	7.5"
Twist Rate	16	26		16	15	15		15
Groove Diameter	0.355	0.430		0.451	0.475	0.500		0.500
OA Length	13.75"	13.75"	11.25"	12.75"	13.75"	13.75"	11.75"	13.75"
Weight	3.9 lbs	3.65 lbs	3.31 lbs	3.7 lbs	3.7 lbs	3.5 lbs	3.25 lbs	3.5 lbs
Height	6"							
Cylinder Width	1.75"							
Trigger Pull	3-4 lbs							
Finish	Brushed Stainless Steel Construction							
Sights	Factory Black Fixed Front / Rear Adjustable							
Shots	6				5			

# Short Cylinder Models

- ▶ All weights are approximate since scales may vary.
- ▶ Barrels are stress-relieved.
- ▶ Shipped with rubber grips or white polymer Bisley grips and scope mount\* (Weaver style)
- ▶ Bisley grips are designated with a (B) at the end of the SKU number.



6-Shot Cylinder  
.357 MAG, .44 MAG &  
.454 Casull only

## 6.5" / 7.5" BARREL BFR SHORT CYLINDER

<b>.357</b> MAGNUM	MODEL: <b>BFR357MAG7-6</b>	7.5" BARREL
<b>.44</b> MAGNUM	MODELS: <b>BFR44MAG7-6</b>	7.5" BARREL
<b>.454</b> CASULL	MODEL: <b>BFR454C6B-6</b> ●	6.5" BARREL
<b>.480/.475</b> LINEBAUGH	MODEL: <b>BFR480-4757B</b> ●	7.5" BARREL
<b>.500</b> JRH	MODEL: <b>BFR500JRH7B</b> ●	7.5" BARREL
<b>.500</b> LINEBAUGH	MODEL: <b>BFR500LB7B</b> ●	7.5" BARREL



Bisley Grips

## 5" BARREL BFR SHORT CYLINDER

<b>.44</b> MAGNUM	MODEL: <b>BFR44MAG5B-6</b> ●	5" BARREL
<b>.500</b> JRH	MODEL: <b>BFR500JRH5B</b> ●	5.5" BARREL

● Bisley Grips Available

\* All BFR's are shipped with MRI scope mount (Weaver style) included in packaging (except for .45LC/.410) and are drilled and tapped for installation with screws supplied. MRI scope mount may be purchased separately for previously owned BFR's sold by MRI before 12/31/03. All previously owned BFR's will need to be drilled and tapped for MRI scope mount to fit. .45 LC/.410 come with ventilated rib attached.



To Build Your Own, Visit [www.MagnumResearchCustoms.com](http://www.MagnumResearchCustoms.com)

## Long Cylinder Models

- ▶ All weights are approximate since scales may vary.
- ▶ Barrels are stress-relieved.
- ▶ The .410 shot shell / slug cartridge is not compatible with the .45/70 caliber revolvers.
- ▶ Bisley grips are designated with a (B) at the end of the SKU number.
- ▶ Shipped with rubber grips or white polymer Bisley grips and scope mount\* (Weaver style)

The .45LC/.410 caliber, 7.5" only has modified choke, wrench, and installed vent rib included. The .410 will accept 3" shotgun shells.

Model	BFR30-30		BFR350L		BFR360	BFR450M	BFR45LC-410	BFR45-70		BFR460SW	BFR500SW	
Caliber	.30/30 Winchester		.350 Legend		.360 Buckhammer	.450 Marlin	.45 Long Colt/.410	.45/70 Gov't		.460 S&W Magnum	.500 S&W Magnum	
Barrel	10"	7.5"	10"	7.5"	10	10"	7.5"	10"	7.5"	10"	10"	7.5"
Twist Rate	10		16		12	14	16	14		16	15	
Groove Diameter	0.308		0.355		0.357	0.458	0.451	0.458		0.451	0.500	
OA Length	17.5"	15"	17.5"	15"	17.5"	17.5"	15"	17.5"	15"	17.5"	17.5"	15"
Weight	5.3 lbs	5 lbs	5 lbs	4.7 lbs	5 lbs	4.8 lbs	4.5 lbs	4.7 lbs	4.3 lbs	4.7 lbs	4.7 lbs	4.5 lbs
Height	6"											
Cylinder Width	1.75"											
Trigger Pull	3-4 lbs											
Finish	Brushed Stainless Steel Construction											
Sights	Factory Black Fixed Front / Rear Adjustable											
Shots	6				5		6		5			



6-Shot Cylinder  
.30/30 Win, .350 Legend,  
.360 Buckhammer &  
.45LC/.410 only



Bisley Grips

### 10" BARREL BFR LONG CYLINDER

- .30/30 WIN** | MODELS: **BFR30-30-6** | **BFR30-30B-6** ●
- .350 LEGEND** | MODEL: **BFR350L10**
- .360 BUCKHAMMER** | MODELS: **BFR360**
- .45/70 GOV'T** | MODELS: **BFR45-70** | **BFR45-70B** ●
- .450 MARLIN** | MODEL: **BFR450MB** ●
- .460 S&W** | MODEL: **BFR460SW10**
- .500 S&W** | MODELS: **BFR500SW10** | **BFR500SW10B** ●



### 7.5" BARREL BFR LONG CYLINDER

- .30/30 WIN** | MODELS: **BFR30-307-6** | **BFR30-307B-6** ●
- .350 LEGEND** | MODEL: **BFR350L7**
- .45/70 GOV'T** | MODELS: **BFR45-707** | **BFR45-707B** ●
- .500 S&W** | MODELS: **BFR500SW7**



### 7.5" BFR 45LC/.410 w / VENT RIB

- .45 LC/.410** | MODELS: **BFR45LC-410-6** | **BFR45LC-410B-6** ●

- ▶ BFR45LC-410, 7.5" utilizes a choke, includes installed vent rib
- ▶ No Scope mount included

● Bisley Grips Available

\* All BFR's are shipped with MRI scope mount (Weaver style) included in packaging (except for .45LC/.410) and are drilled and tapped for installation with screws supplied. MRI scope mount may be purchased separately for previously owned BFR's sold by MRI before 12/31/03. All previously owned BFR's will need to be drilled and tapped for MRI scope mount to fit. .45 LC/.410 come with ventilated rib attached.

The BFR Precision Center offers full line of custom BFR's made to order, as well as custom work to existing BFR's. Contact us for pricing and options 218-746-3459.

**MAGNUM LITE** 



To Build Your Own, Visit [www.MagnumResearchCustoms.com](http://www.MagnumResearchCustoms.com)

**SWITCHBOLT**™

## SWITCHBOLT™ RIMFIRE RIFLES

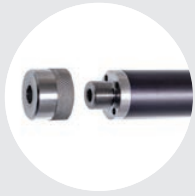
The extraordinary SwitchBolt™ .22LR rifles are an evolutionary extension of the famously lightweight and accurate MLR rimfire rifles from Magnum Research. The SwitchBolt™ is born of extensive research and development, tested and perfected on the professional speed shooting circuit. Built in the USA, the SwitchBolt™ receivers, with integral Picatinny rail, are machined from a 6061-T6 extrusion, and then given a hard anodized coat for an extremely durable finish. SwitchBolt™ rifles come equipped with a bolt handle on the left side of a right handed bolt. The result is an extremely fast and handy configuration for a right-handed shooter whose trigger hand never has to leave the stock to charge the rifle.

The lightweight SwitchBolt™ rifle is available in a wide range of configurations to suit any shooter. Choose from patented carbon barrels, or our new Ultra Tensioned barrel options for exceptional accuracy. Pair your preferred barrel with a variety of stock options, including the new Luth-AR and Archangel models, as well as ambidextrous designs in both wood and polymer. Select the SwitchBolt™ that best fits your needs and budget, then visit your favorite local gun dealer to order. This is your chance to own a legendary rifle designed to be the most accurate, lightweight rimfire on the market today!



### 18" ULTRA TENSIONED BARREL, HOGUE® OVERMOLDED™ STOCK RIFLE

**.22 LR** | **MODEL: SSH22UT** | **10 ROUND** | **18" ULTRA BARREL** | **4.67 lbs WEIGHT** | **36.75" LENGTH**



18" ULTRA TENSIONED BARREL, AMBIDEXTROUS THUMBHOLE BLACK STOCK RIFLE

.22 LR | MODEL: SSAT22UT | 10 ROUND | 18" ULTRA BARREL | 4.5 lbs WEIGHT | 36.625" LENGTH



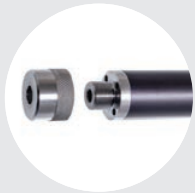
16.5" CARBON BARREL, AMBIDEXTROUS THUMBHOLE BLACK STOCK RIFLE

.22 LR | MODEL: SSAT22G | 10 ROUND | 16.5" CARBON BARREL | 4.25 lbs WEIGHT | 35.125" LENGTH



18" ULTRA TENSIONED BARREL, LUTH-AR™ MCA-22™ BLACK STOCK RIFLE

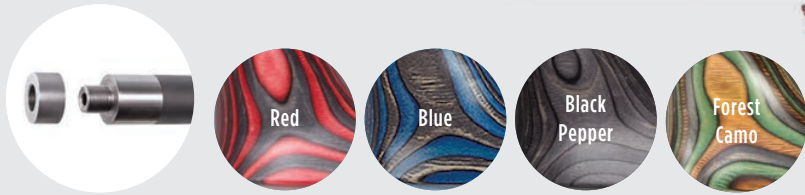
.22 LR | MODEL: SSL22UT | 10 ROUND | 18" CARBON BARREL | 4.67 lbs WEIGHT | 35" - 38.5" LENGTH



18" ULTRA TENSIONED BARREL, TACTICAL BLACK STOCK RIFLE

.22 LR | MODEL: SSTB22UT | 10 ROUND | 18" CARBON BARREL | 3.88 lbs WEIGHT | 32.75" - 36.5" LENGTH

All Magnum Lite Rifles ship with scope rings.



• Shown SSER22G

16.5" CARBON BARREL, AMBIDEXTROUS EVOLUTION LAMINATE STOCK RIFLE

**.22 LR** | MODEL: **SSER22G** (Red) | **10** ROUND | **16.5"** CARBON BARREL | **4.25** lbs WEIGHT | **35.125"** LENGTH

**.22 LR** | MODELS: **SSEB22G** (Blue) | **SSEBP22G** (Black Pepper) | **SSEFC22G** (Forest Camo)



16.5" CARBON BARREL, HOGUE® OVERMOLDED™ STOCK RIFLE

**.22 LR** | MODEL: **SSH22GT** | **10** ROUND | **16.5"** CARBON BARREL | **4.25** lbs WEIGHT | **35.5"** LENGTH



16.5" CARBON BARREL, TACTICAL BLACK STOCK RIFLE

**.22 LR** | MODEL: **SSTB22G** | **10** ROUND | **16.5"** CARBON BARREL | **4.0** lbs WEIGHT | **31.75" - 35.5"** LENGTH

All Magnum Lite Rifles ship with scope rings.

SWITCHBOLT™



Length: 18.25" (Folded)

16.5" CARBON BARREL, ARCHANGEL® BLACK FOLDING BACKPACK STOCK RIFLE

.22 LR | MODEL: **SSAA22G** | 10 ROUND | 16.5" CARBON BARREL | 4.32 lbs WEIGHT | 34.25" LENGTH



16.5" CARBON BARREL, LUTH-AR™ MCA-22™ BLACK STOCK RIFLE

.22 LR | MODEL: **SSL22G** | 10 ROUND | 16.5" CARBON BARREL | 4.45 lbs WEIGHT | 33" - 36.5" LENGTH



STRAIGHT BOLT

STRAIGHT BOLT  
19" CARBON BARREL, HOGUE® OVERMOLDED™ STOCK RIFLE

.22 WMR | MODEL: **SBA22WMH** | 9 ROUND | 19" CARBON BARREL | 5.45 lbs WEIGHT | 37.5" LENGTH

.17 HMR | MODEL: **SBA17HMH** | 9 ROUND | 19" CARBON BARREL | 5.6 lbs WEIGHT | 37.5" LENGTH

• Shown SBA17HMH

**BOLT ACTION**

All Magnum Lite Rifles ship with scope rings.



# VIKING

CUSTOM DESERT EAGLE

MODEL: DE50VK1

.50 AE | 7+1 ROUND

Harness the untamed power of a legend, reborn with the spirit of a warrior. We've taken the iconic Desert Eagle pistol, a symbol of raw strength and cinematic history, and infused it with the soul of the Norsemen. This is not just a firearm; it's a masterpiece of power and artistry, crafted for the modern-day Viking.

The distressed, battle-worn finish tells a story of glorious conflict, while the slide and barrel are deeply engraved with intricate, flowing knotwork reminiscent of ancient sagas carved in stone. This masterpiece is built upon the powerful and unmistakable Desert Eagle platform, ensuring legendary performance.

Complemented by a distressed gray and black battle-worn finish for a rugged, heirloom appearance. The experience is completed by the beautifully engraved Viking longship on the custom aluminum grips.

Functionality is not sacrificed for form; it boasts modern performance features, including an integrated muzzle brake for superior control and a Picatinny rail ready for your preferred optics.

Don't just own a firearm. Wield a legend. Contact your local dealer for availability and claim your piece of history today!



CORPORATE HQ  
105 Kahr Avenue  
Greeley, PA 18425  
Tel: +1 (508) 795-3919 Fax: +1 (570) 685-2222

KAHR ARMS, AUTO-ORDNANCE/THOMPSON FACTORY  
105 Kahr Avenue  
Greeley, PA 18425  
Tel: +1 (508) 795-3919 Fax: +1 (570) 685-2222  
Email: info@kahr.com

MAGNUM RESEARCH FACTORY  
12602 33rd Avenue SW  
Pillager, MN 56473  
Tel: +1 (218) 746-3459 Fax: +1 (218) 746-3097  
Email: info@magnumresearch.com